



# FIRE DANGER FORECAST IN LEBANON



|                         |                              |
|-------------------------|------------------------------|
| <b>Period</b>           | <b>16 Jan – 18 Jan, 2019</b> |
| <b>Publication</b>      | 15 Jan 2019 - 18:01          |
| <b>Weather Forecast</b> | 15 Jan, 2019                 |
| <b>Data Source</b>      | Ecmwf                        |

Land and Natural Resources Program  
Institute of the Environment  
University of Balamand

The presented fire danger index (Mitri, 2015) is based on a cross-tabulation between Lebanon’s fire risk map (Mitri et al., 2015) and the Fire Weather Index (FWI) as produced by the European Forest Fire Information System (EFFIS).

**References:**

Mitri, G., Jazi, M., McWethy, D. 2015 Assessment of wildfire risk in Lebanon using Geographic Object-based image analysis. *Photogrammetric Engineering & Remote Sensing*. Vol. 81, No. 6, June 2015, pp. 499–506.

Mitri, G. 2015. Advancing Lebanon’s fire danger forecast. In 10th EARSeL Forest Fire Special Interest Workshop Sensors, multi-sensor integration, large volumes: new opportunities and challenges in forest fire research” (Themistocleous, K., Hadjimitsis, D., Gitas, I., and Boschetti, L. Ed.), 2-5 November 2015, Limassol, P.33

**Produced by:**

Land and Natural Resources Program  
 Institute of the Environment  
 University of Balamand  
 P.O.Box 100, Tripoli, LEBANON  
 Tel-Fax: 00 961 6 930 257  
 www.balamand.edu.lb  
 home.balamand.edu.lb/wildfire  
 ioe-firelab.balamand.edu.lb

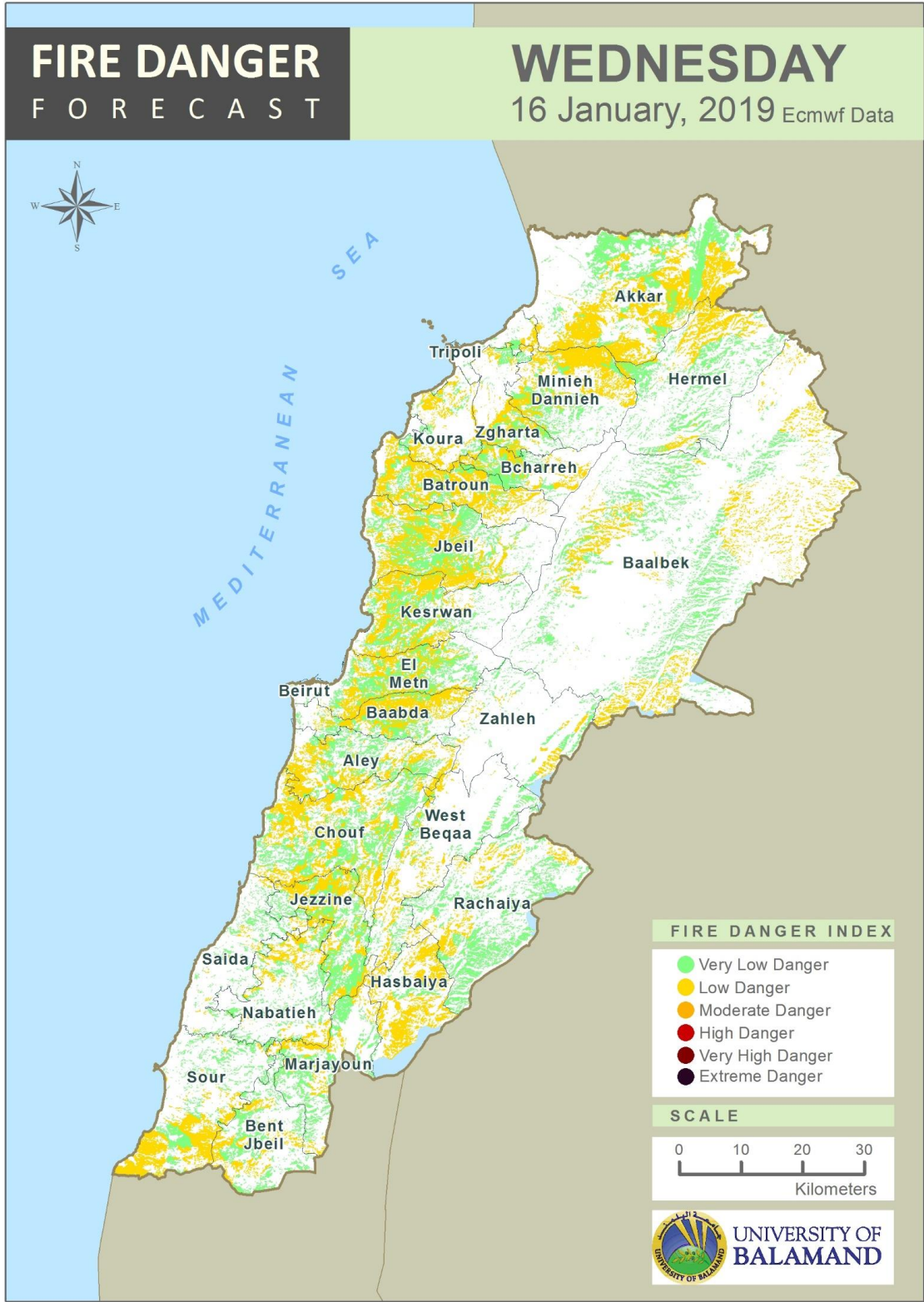
**Table of Contents**

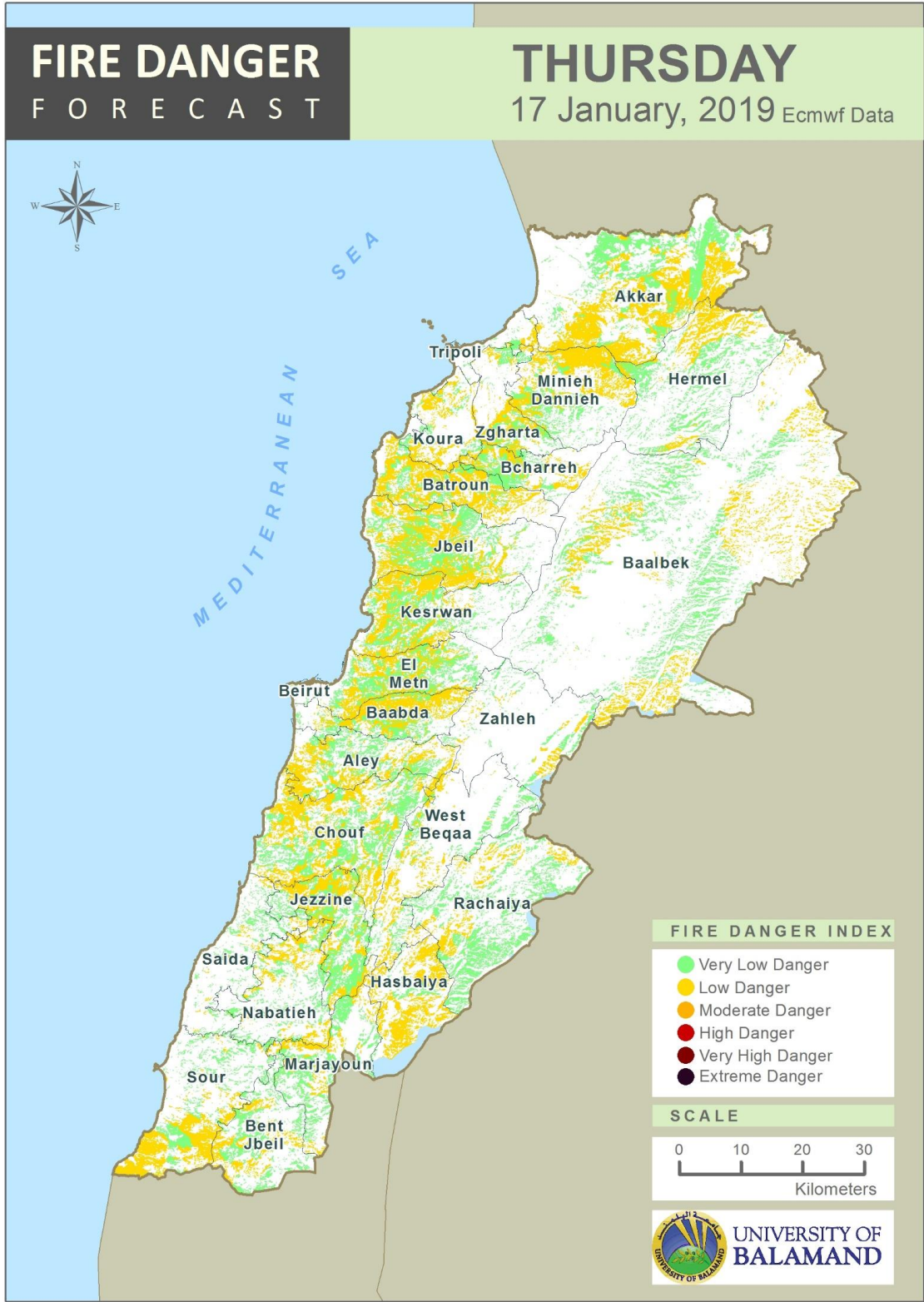
Lebanon Fire Danger Forecast Day 1 .....3  
 Lebanon Fire Danger Forecast Day 2 .....4  
 Lebanon Fire Danger Forecast Day 3 .....5  
 Mohafazat Akkar Forecast .....6  
 Mohafazat Baalbek-Hermel Forecast .....8  
 Mohafazat North Lebanon Forecast .....10  
 Mohafazat Bekaa Forecast .....14  
 Mohafazat Mount Lebanon Forecast .....16  
 Mohafazat Beirut Forecast .....22  
 Mohafazat South Lebanon Forecast .....24  
 Mohafazat Nabatieh Forecast .....27  
 Disclaimer .....30

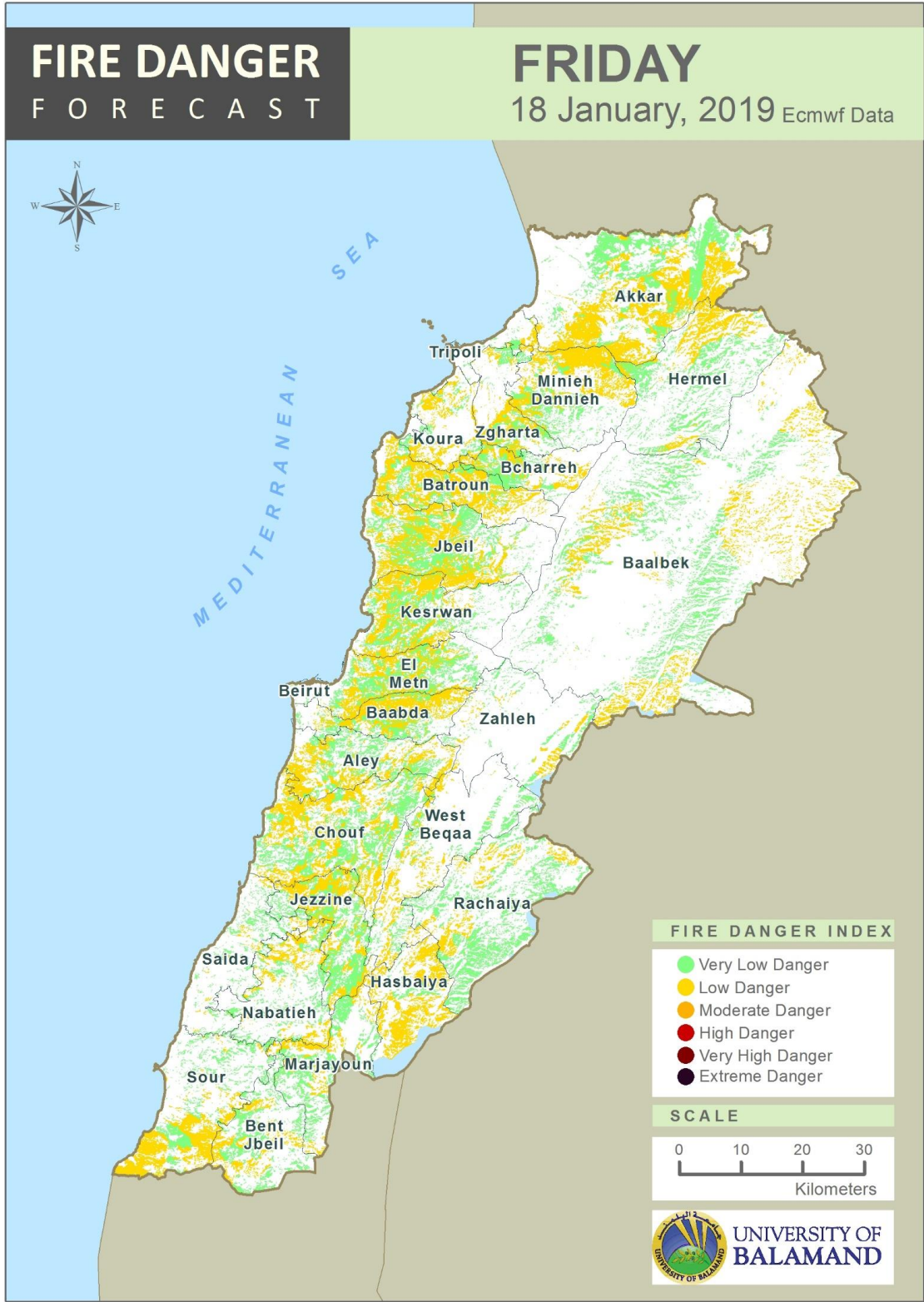
**Abbreviations**

| Fire Danger Index Level | Description  |
|-------------------------|--|
| <b>NR</b>               | No significant wildfire risk   |
| <b>VL</b>               | Very low possibility of any fire occurrence. Fires (if any) can be easily suppressed.  |
| <b>L</b>                | Low possibility of fire occurrence. Fires can mostly occur in grassland and shrubland. Fires can be easily controlled.   |
| <b>M</b>                | Moderate possibility of fire occurrence. Fires can be controlled at early stages but can also become intense and uncontrollable if not suppressed immediately. Fires need to be very well extinguished.  |
| <b>H</b>                | High possibility of fire occurrence and spread. Fires are most likely uncontrollable, fast, and intense. The careful surveillance of areas with VH fire danger is highly recommended. Homes, infrastructures, protected forest areas, and forest natural reserves might be at high risk of fire. The careful surveillance of areas with “High” fire danger is highly recommended. Fires need to be very well extinguished and monitored after suppression. |
| <b>VH</b>               | Very high possibility of fire occurrence and spread. Fires are uncontrollable, fast and intense spread affecting relatively large vegetated areas. Homes, infrastructures, protected forest areas, and forest natural reserves are at very high risk of fire. The careful surveillance of areas with “Very High” fire danger is extremely recommended. Fires need to be very well extinguished and monitored after suppression.                            |
| <b>E</b>                | Extreme conditions of fire occurrence and spread. Preparedness must be increased at a maximum level.   |









| Mohafazat Akkar Forecast |        |        |        |                          |        |        |        |                   |        |        |        |
|--------------------------|--------|--------|--------|--------------------------|--------|--------|--------|-------------------|--------|--------|--------|
| Caza: Akkar              |        |        |        |                          |        |        |        |                   |        |        |        |
| Cadastral Area           | 16 Jan | 17 Jan | 18 Jan | Cadastral Area           | 16 Jan | 17 Jan | 18 Jan | Cadastral Area    | 16 Jan | 17 Jan | 18 Jan |
| Aadouiyé                 | VL     | VL     | VL     | Darine                   | VL     | VL     | VL     | El Meghrak        | NR     | NR     | NR     |
| Aaidmoun                 | L      | L      | L      | Deir Dalloom             | VL     | VL     | VL     | El Mjaydel        | L      | L      | L      |
| Aaiyat                   | L      | L      | L      | Deir Janine              | L      | L      | L      | El Mqaiteaa       | L      | L      | L      |
| Aakkar el Aatiqa         | L      | L      | L      | Dinbou                   | L      | L      | L      | El Qantara        | L      | L      | L      |
| Aamaret el Bikat         | L      | L      | L      | Douar Fatne              | L      | L      | L      | El Qlaiaat        | VL     | VL     | VL     |
| Aandqet                  | L      | L      | L      | Ed Daghle                | VL     | VL     | VL     | El Qorne          | L      | L      | L      |
| Aarida                   | L      | L      | L      | Ed Daoura                | L      | L      | L      | El Qraiyat        | L      | L      | L      |
| Aayoun el Ghezlane       | L      | L      | L      | Ed Dibbabiye el Gharbiye | L      | L      | L      | El Qsair          | L      | L      | L      |
| Ain ez Zait              | VL     | VL     | VL     | Ej Jdide                 | VL     | VL     | VL     | En Nfesse         | VL     | VL     | VL     |
| Ain Yacoub               | L      | L      | L      | El Aabboudiye            | VL     | VL     | VL     | Er Ransiye        | L      | L      | L      |
| Akroum                   | L      | L      | L      | El Aabde                 | VL     | VL     | VL     | Er Rihaniye       | L      | L      | L      |
| Baddouaa                 | L      | L      | L      | El Aamara                | L      | L      | L      | Es Sfine          | L      | L      | L      |
| Barbara                  | VL     | VL     | VL     | El Aamriye               | L      | L      | L      | Es Sammaqiye      | VL     | VL     | VL     |
| Bebnine                  | L      | L      | L      | El Aaouié                | L      | L      | L      | Es Souaisse       | L      | L      | L      |
| Beino                    | L      | L      | L      | El Aarida                | L      | L      | L      | Es Srajiye        | VL     | VL     | VL     |
| Beit Ayoub               | L      | L      | L      | El Aarme                 | L      | L      | L      | Et Tleil          | L      | L      | L      |
| Beit Mellat              | L      | L      | L      | El Aayoun                | VL     | VL     | VL     | Ez Zouarib        | VL     | VL     | VL     |
| Beit Younes              | L      | L      | L      | El Baghdadadi            | L      | L      | L      | Fnaideq           | L      | L      | L      |
| Berqayel                 | L      | L      | L      | El Barde                 | L      | L      | L      | Fsaqine           | VL     | VL     | VL     |
| Bezbinda                 | L      | L      | L      | El Bire                  | L      | L      | L      | Ghzaile           | VL     | VL     | VL     |
| Bqerzla                  | L      | L      | L      | El Borj                  | L      | L      | L      | Habchit           | L      | L      | L      |
| Bzal                     | L      | L      | L      | El Fraidis               | L      | L      | L      | Haitla            | VL     | VL     | VL     |
| Chadra                   | L      | L      | L      | El Haissa                | NR     | NR     | NR     | Haizouq           | L      | L      | L      |
| Chane                    | L      | L      | L      | El Hedd                  | VL     | VL     | VL     | Hakour            | L      | L      | L      |
| Chaqdouf                 | L      | L      | L      | El Hmaira                | L      | L      | L      | Halba             | L      | L      | L      |
| Charbila                 | L      | L      | L      | El Houaich               | L      | L      | L      | Haouchab          | VL     | VL     | VL     |
| Cheik Taba               | VL     | VL     | VL     | El Khirbe                | VL     | VL     | VL     | Hnaider           | L      | L      | L      |
| Cheikh Aammar            | VL     | VL     | VL     | El Kneisse               | VL     | VL     | VL     | Hokr ed Dahri     | VL     | VL     | VL     |
| Cheikh Mohammed          | VL     | VL     | VL     | El Knisse                | L      | L      | L      | Hrar              | L      | L      | L      |
| Cheikh Taba Es Sahl      | NR     | NR     | NR     | El Kouachra              | L      | L      | L      | Idbil             | VL     | VL     | VL     |
| Cheikh Zennad            | NR     | NR     | NR     | El Kouraniye             | NR     | NR     | NR     | Jabal El Qattara  | L      | L      | L      |
| Cheikhlar                | L      | L      | L      | El Majdal                | L      | L      | L      | Janine            | L      | L      | L      |
| Chir Hmairine            | L      | L      | L      | El Malloul               | L      | L      | L      | Jdaidet el Qaitaa | L      | L      | L      |
| Dahr el Laissine         | L      | L      | L      | El Massaoudiye           | VL     | VL     | VL     | Jebrayel          | L      | L      | L      |
| Dahr El Maqam            | VL     | VL     | VL     | El Mazraah               | L      | L      | L      | Jouret ej Jaaile  | L      | L      | L      |

## Mohafazat Akkar Forecast (Cont.)

| Caza: Akkar         |        |        |        |                  |        |        |        |                      |        |        |        |
|---------------------|--------|--------|--------|------------------|--------|--------|--------|----------------------|--------|--------|--------|
| Cadastral Area      | 16 Jan | 17 Jan | 18 Jan | Cadastral Area   | 16 Jan | 17 Jan | 18 Jan | Cadastral Area       | 16 Jan | 17 Jan | 18 Jan |
| Jouret Srar         | VL     | VL     | VL     | Marlayet Haddara | L      | L      | L      | Rmah                 | L      | L      | L      |
| Karm el Aasfour     | L      | L      | L      | Mazraat Ghattas  | L      | L      | L      | Saadine              | VL     | VL     | VL     |
| Kefr                | L      | L      | L      | Mchta Hammoud    | VL     | VL     | VL     | Saidnaya             | VL     | VL     | VL     |
| Kfar Harra          | L      | L      | L      | Memnaa           | L      | L      | L      | Saisouk              | L      | L      | L      |
| Kfar Melki          | NR     | NR     | NR     | Miniara          | L      | L      | L      | Sammouniye           | VL     | VL     | VL     |
| Kfar Noun           | L      | L      | L      | Mishmish         | L      | L      | L      | Sfainet el Qaitaa    | L      | L      | L      |
| Khalsa              | VL     | VL     | VL     | Monjez           | L      | L      | L      | Shattaha             | VL     | VL     | VL     |
| Khane Hayat         | VL     | VL     | VL     | Msalla           | L      | L      | L      | Sindianet Zeidane    | L      | L      | L      |
| Khirbet             | L      | L      | L      | Mzeihme          | VL     | VL     | VL     | Soultane Brahim      | VL     | VL     | VL     |
| Khirbet Daoud       | VL     | VL     | VL     | Nabaa el Ghzaile | VL     | VL     | VL     | Srar                 | VL     | VL     | VL     |
| Khirbet ej jendi    | VL     | VL     | VL     | Noura et Tahta   | L      | L      | L      | Tashea               | L      | L      | L      |
| Khirbet er Roummane | L      | L      | L      | Ouadi ej Jamous  | VL     | VL     | VL     | Tell aabas el Charqi | VL     | VL     | VL     |
| Khirbet Shar        | VL     | VL     | VL     | Ouadi el Haour   | VL     | VL     | VL     | Tell aabas el Gharbi | VL     | VL     | VL     |
| Khraibe             | L      | L      | L      | Ouadi Hmais      | L      | L      | L      | Tell Biri            | VL     | VL     | VL     |
| Knaisse             | L      | L      | L      | Qabaait          | L      | L      | L      | Tell Hmaira          | VL     | VL     | VL     |
| Koueikhat           | VL     | VL     | VL     | Qachlaq          | VL     | VL     | VL     | Tell Kiri            | VL     | VL     | VL     |
| Kroum Aarab         | VL     | VL     | VL     | Qarha            | VL     | VL     | VL     | Tell Sebeal          | VL     | VL     | VL     |
| llat                | L      | L      | L      | Qarqaf           | L      | L      | L      | Tikrit               | L      | L      | L      |
| Machha              | L      | L      | L      | Qbaiyat          | L      | L      | L      | Zouk el Hbalsa       | VL     | VL     | VL     |
| Machta Hassan       | VL     | VL     | VL     | Qbouta           | L      | L      | L      | Zouk Haddara         | L      | L      | L      |
| Majdala             | L      | L      | L      | Qloud el Baqie   | L      | L      | L      | Zouq el Hosniye      | VL     | VL     | VL     |
| Mar Touma           | VL     | VL     | VL     | Rahbe            | L      | L      | L      |                      |        |        |        |



## Mohafazat Baalbeck-Hermel Forecast

| Caza: Baalbek    |        |        |        |                    |        |        |        |                      |        |        |        |
|------------------|--------|--------|--------|--------------------|--------|--------|--------|----------------------|--------|--------|--------|
| Cadastral Area   | 16 Jan | 17 Jan | 18 Jan | Cadastral Area     | 16 Jan | 17 Jan | 18 Jan | Cadastral Area       | 16 Jan | 17 Jan | 18 Jan |
| Aadous           | NR     | NR     | NR     | El Khraibe         | L      | L      | L      | Kneisse              | L      | L      | L      |
| Aaqab            | L      | L      | L      | El Mcheriaa        | L      | L      | L      | Laboue               | L      | L      | L      |
| AAqbet El Hamra  | VL     | VL     | VL     | El Moqraq          | L      | L      | L      | Maaraboun            | L      | L      | L      |
| Aaqbet Qarha     | VL     | VL     | VL     | El Qaa             | L      | L      | L      | Majdaloun            | VL     | VL     | VL     |
| Aarsal           | L      | L      | L      | El Mahafir         | L      | L      | L      | Maqne                | L      | L      | L      |
| Aayoun Orghous   | L      | L      | L      | El-Ram             | L      | L      | L      | Mazraat beit Mchaik  | L      | L      | L      |
| Ain Bourdai      | VL     | VL     | VL     | En Nabi CHbat      | VL     | VL     | VL     | Mrah el Mechmechi    | L      | L      | L      |
| Ain ej Jaouze    | L      | L      | L      | En Nabi Chit       | L      | L      | L      | Nabha                | VL     | VL     | VL     |
| Ainata           | L      | L      | L      | En Nabi Osmane     | L      | L      | L      | Nahle                | L      | L      | L      |
| Baalbek          | VL     | VL     | VL     | Et Taybeh          | VL     | VL     | VL     | Ouadi el Aaoss       | L      | L      | L      |
| Barqa            | L      | L      | L      | Fekehe             | L      | L      | L      | Ouadi et Tourkman    | L      | L      | L      |
| Bechouat         | L      | L      | L      | Halbata            | L      | L      | L      | Qaa Ouadi El Khanzer | L      | L      | L      |
| Bednayel         | L      | L      | L      | Ham                | L      | L      | L      | Qeddam               | L      | L      | L      |
| Beit chama       | L      | L      | L      | Haouch Barada      | NR     | NR     | NR     | Qsarnaba             | VL     | VL     | VL     |
| Boudai           | L      | L      | L      | Haouch ed Dahab    | NR     | NR     | NR     | Ras Baalbeck         | L      | L      | L      |
| Britel           | VL     | VL     | VL     | Haouch en Nabe     | VL     | VL     | VL     | Ras el Aassi         | VL     | VL     | VL     |
| Btedaai          | L      | L      | L      | Haouch Snaid       | VL     | VL     | VL     | Riha                 | L      | L      | L      |
| Chaat            | VL     | VL     | VL     | Haouch tell Safiye | VL     | VL     | VL     | Saaide               | L      | L      | L      |
| Chir el Ghourabi | VL     | VL     | VL     | Haouerte           | L      | L      | L      | Sbouba               | L      | L      | L      |
| Chlifa           | L      | L      | L      | Harbata            | L      | L      | L      | Serraain el Fauouqa  | VL     | VL     | VL     |
| Chmistar         | VL     | VL     | VL     | Hizzine            | NR     | NR     | NR     | Talia                | VL     | VL     | VL     |
| Dar el Ouassaa   | L      | L      | L      | Hortaala           | L      | L      | L      | Taraya               | L      | L      | L      |
| Deir El Ahmar    | L      | L      | L      | Houch er Rafqa     | L      | L      | L      | Temnine el Fauouqa   | VL     | VL     | VL     |
| Douris           | VL     | VL     | VL     | laat               | L      | L      | L      | Temnine et Tehta     | VL     | VL     | VL     |
| Ech Chehaymie    | VL     | VL     | VL     | Jebaa              | L      | L      | L      | Tfail                | L      | L      | L      |
| El Ain           | L      | L      | L      | Jenta              | L      | L      | L      | Yahfoufa             | L      | L      | L      |
| El Bajjaje       | NR     | NR     | NR     | Karzoun            | L      | L      | L      | Yammoune             | L      | L      | L      |
| El Hadet         | L      | L      | L      | Kfar Dabach        | L      | L      | L      | Younine              | L      | L      | L      |
| El Kharayeb      | L      | L      | L      | Kfardaane          | L      | L      | L      | Zabboud              | L      | L      | L      |
| El Khoder        | L      | L      | L      | Khirab ed Dmane    | L      | L      | L      |                      |        |        |        |

| Mohafazat Baalbeck-Hermel Forecast |        |        |        |                        |        |        |        |                          |        |        |        |
|------------------------------------|--------|--------|--------|------------------------|--------|--------|--------|--------------------------|--------|--------|--------|
| Caza: Hermel                       |        |        |        |                        |        |        |        |                          |        |        |        |
| Cadastral Area                     | 16 Jan | 17 Jan | 18 Jan | Cadastral Area         | 16 Jan | 17 Jan | 18 Jan | Cadastral Area           | 16 Jan | 17 Jan | 18 Jan |
| Beit Hsain Aallaou                 | L      | L      | L      | Hermel                 | L      | L      | L      | Ras Baalbeck Ouadi Faara | VL     | VL     | VL     |
| Biyout es Souh                     | L      | L      | L      | Ouadi Faqra            | L      | L      | L      | Sharbine                 | L      | L      | L      |
| El Maisra                          | L      | L      | L      | Ras Baalbeck El Gharbi | L      | L      | L      | Zighrine                 | L      | L      | L      |
| Es Souaidie                        | L      | L      | L      |                        |        |        |        |                          |        |        |        |

| Mohafazat North Lebanon Forecast |        |        |        |                |        |        |        |                      |        |        |        |
|----------------------------------|--------|--------|--------|----------------|--------|--------|--------|----------------------|--------|--------|--------|
| Caza: Batroun                    |        |        |        |                |        |        |        |                      |        |        |        |
| Cadastral Area                   | 16 Jan | 17 Jan | 18 Jan | Cadastral Area | 16 Jan | 17 Jan | 18 Jan | Cadastral Area       | 16 Jan | 17 Jan | 18 Jan |
| Aabdilli                         | L      | L      | L      | El Ftahat      | L      | L      | L      | Mrah el Hajj         | L      | L      | L      |
| Aabrine                          | L      | L      | L      | El Heri        | VL     | VL     | VL     | Mrah ez Ziyate       | L      | L      | L      |
| Aartez                           | L      | L      | L      | Ghouma         | L      | L      | L      | Mrah Shdid           | L      | L      | L      |
| Assia                            | L      | L      | L      | Hadtoun        | L      | L      | L      | Nahle                | L      | L      | L      |
| Basbina                          | L      | L      | L      | Hamat          | L      | L      | L      | Niha                 | L      | L      | L      |
| Batroun                          | L      | L      | L      | Harbouna       | L      | L      | L      | Ouata Houb           | L      | L      | L      |
| Bchaale                          | L      | L      | L      | Hardine        | L      | L      | L      | Qarnaoun             | L      | L      | L      |
| Bechtoudar                       | L      | L      | L      | Beit kassab    | L      | L      | L      | Quajh el Aajar       | L      | L      | L      |
| Beit Chlala                      | L      | L      | L      | Helta          | L      | L      | L      | Racha                | L      | L      | L      |
| Bijdarfil                        | L      | L      | L      | Ijdabra        | L      | L      | L      | Rackkida             | L      | L      | L      |
| Boqsmaiya                        | L      | L      | L      | Jibla          | L      | L      | L      | Ram                  | L      | L      | L      |
| Chatine                          | L      | L      | L      | Jrabta         | L      | L      | L      | Ramate               | L      | L      | L      |
| Chekka                           | VL     | VL     | VL     | Jrane          | L      | L      | L      | Ras Nhach            | L      | L      | L      |
| Daal                             | L      | L      | L      | Kfar Aabida    | L      | L      | L      | Rashana              | L      | L      | L      |
| Dahr Abi Yaghi                   | L      | L      | L      | Kfar Chlaimane | L      | L      | L      | Selaata              | NR     | NR     | NR     |
| Dayr Mar Youssef                 | L      | L      | L      | Kfar Hai       | L      | L      | L      | Sghar                | L      | L      | L      |
| Deir Billa                       | L      | L      | L      | Kfar Hatna     | L      | L      | L      | Shabtine             | L      | L      | L      |
| Deir Mar Youhanna                | L      | L      | L      | Kfar Hilda     | L      | L      | L      | Smare Jbayl          | L      | L      | L      |
| Dirya                            | L      | L      | L      | Kfar Khollos   | L      | L      | L      | Sourat               | L      | L      | L      |
| Douhour el Makmel                | L      | L      | L      | Kfifane        | L      | L      | L      | Tannourine el Faouqa | L      | L      | L      |
| Douma                            | L      | L      | L      | Kfour el Aarbe | L      | L      | L      | Tannourine el Tahta  | L      | L      | L      |
| Douq                             | L      | L      | L      | Koubba         | L      | L      | L      | Tehoum               | L      | L      | L      |
| Ed Dahr                          | L      | L      | L      | Kour           | L      | L      | L      | Toula                | L      | L      | L      |
| Edde                             | L      | L      | L      | Masrah         | L      | L      | L      | Zane                 | L      | L      | L      |
| El Aalale                        | L      | L      | L      | Mehmarch       | L      | L      | L      |                      |        |        |        |

| Mohafazat North Lebanon Forecast |        |        |        |                   |        |        |        |                   |        |        |        |
|----------------------------------|--------|--------|--------|-------------------|--------|--------|--------|-------------------|--------|--------|--------|
| Caza: Bcharreh                   |        |        |        |                   |        |        |        |                   |        |        |        |
| Cadastral Area                   | 16 Jan | 17 Jan | 18 Jan | Cadastral Area    | 16 Jan | 17 Jan | 18 Jan | Cadastral Area    | 16 Jan | 17 Jan | 18 Jan |
| Aabdine                          | L      | L      | L      | Brissat           | L      | L      | L      | Mazraat Bani Saab | L      | L      | L      |
| Bane                             | L      | L      | L      | Chira             | L      | L      | L      | Metrit            | L      | L      | L      |
| Bazaoun                          | L      | L      | L      | Ed Dimane         | L      | L      | L      | Qnaiouer          | L      | L      | L      |
| Bcharreh                         | L      | L      | L      | Hadath ej Joubbe  | L      | L      | L      | Qnat              | L      | L      | L      |
| Beit Menzer                      | L      | L      | L      | Hadshit           | L      | L      | L      | Qrani El Oudaa    | L      | L      | L      |
| Billa                            | L      | L      | L      | Hasraoun          | L      | L      | L      | Tourza            | L      | L      | L      |
| Blaouza                          | L      | L      | L      | Maghr el Ahoual   | L      | L      | L      | Wadi Qannoubine   | L      | L      | L      |
| Bqaa Kafra                       | L      | L      | L      | Mazraat Aassaf    | L      | L      | L      |                   |        |        |        |
| Bqorqacha                        | L      | L      | L      | Mazraat Ain Baqra | L      | L      | L      |                   |        |        |        |

| Mohafazat North Lebanon Forecast |        |        |        |                  |        |        |        |                    |        |        |        |
|----------------------------------|--------|--------|--------|------------------|--------|--------|--------|--------------------|--------|--------|--------|
| Caza: Koura                      |        |        |        |                  |        |        |        |                    |        |        |        |
| Cadastral Area                   | 16 Jan | 17 Jan | 18 Jan | Cadastral Area   | 16 Jan | 17 Jan | 18 Jan | Cadastral Area     | 16 Jan | 17 Jan | 18 Jan |
| Aaba                             | L      | L      | L      | Bsarma           | L      | L      | L      | Kfar Hata          | L      | L      | L      |
| Aafsdik                          | L      | L      | L      | Btaaboura        | L      | L      | L      | Kfar Hazir         | L      | L      | L      |
| Ain Aakrine                      | L      | L      | L      | Btouratij        | L      | L      | L      | Kfar Qabel         | L      | L      | L      |
| Amioun                           | L      | L      | L      | Bziza            | L      | L      | L      | Kfar Saroun        | L      | L      | L      |
| Badbhoun                         | L      | L      | L      | Dar Beachtar     | L      | L      | L      | Kifraiya           | L      | L      | L      |
| Barghoun                         | L      | L      | L      | Dar Chamizzine   | L      | L      | L      | Kousba             | L      | L      | L      |
| Barsa                            | L      | L      | L      | Dedde            | L      | L      | L      | Ijd Aabrine        | L      | L      | L      |
| Batroumine                       | L      | L      | L      | Deir el Balamand | L      | L      | L      | Majdel             | L      | L      | L      |
| Bdebba                           | L      | L      | L      | El Hraishi       | L      | L      | L      | Qalhat             | L      | L      | L      |
| Bechmizzine                      | L      | L      | L      | El Bqaiiaa       | L      | L      | L      | Ras Masqa          | L      | L      | L      |
| Bednayel                         | L      | L      | L      | En Nakhle        | L      | L      | L      | Rechdibine         | L      | L      | L      |
| Betram                           | L      | L      | L      | Enfe             | L      | L      | L      | Zakroun            | L      | L      | L      |
| Bhabbouch                        | L      | L      | L      | Fiaa             | L      | L      | L      | Zgharta el Mtaoule | L      | L      | L      |
| Bkeftine                         | L      | L      | L      | Kaftoun          | L      | L      | L      |                    |        |        |        |
| Bnahrane                         | L      | L      | L      | Kfar Aaqqa       | L      | L      | L      |                    |        |        |        |

| Mohafazat North Lebanon Forecast |        |        |        |                 |        |        |        |                     |        |        |        |
|----------------------------------|--------|--------|--------|-----------------|--------|--------|--------|---------------------|--------|--------|--------|
| Caza: Minieh-Dannieh             |        |        |        |                 |        |        |        |                     |        |        |        |
| Cadastral Area                   | 16 Jan | 17 Jan | 18 Jan | Cadastral Area  | 16 Jan | 17 Jan | 18 Jan | Cadastral Area      | 16 Jan | 17 Jan | 18 Jan |
| Aadouï                           | L      | L      | L      | Deir Aamar      | L      | L      | L      | kfar Bebnine        | L      | L      | L      |
| Aaimar                           | L      | L      | L      | Deir Nbouh      | L      | L      | L      | Kfar Chellane       | L      | L      | L      |
| Aassaimout                       | L      | L      | L      | El Beddaoui     | VL     | VL     | VL     | Kfar Habou          | L      | L      | L      |
| Aassoun                          | L      | L      | L      | El Hazmiye      | VL     | VL     | VL     | Merkebta            | L      | L      | L      |
| Aazqai                           | L      | L      | L      | El Kharroub     | L      | L      | L      | Minie               | VL     | VL     | VL     |
| Ain et Tine                      | L      | L      | L      | El Krem         | L      | L      | L      | Mrah Es Sfire       | L      | L      | L      |
| Bakhaoun                         | L      | L      | L      | El Midane       | L      | L      | L      | Mrah Es Sraïj       | L      | L      | L      |
| Bchehara                         | L      | L      | L      | El Qarri        | L      | L      | L      | Nimrine             | L      | L      | L      |
| Bchennata                        | L      | L      | L      | El Quatie       | L      | L      | L      | Ouadi               | L      | L      | L      |
| Behouaita                        | L      | L      | L      | En Nabi Youchaa | L      | L      | L      | Qalaat Aaïchi       | L      | L      | L      |
| Beit el Faqs                     | L      | L      | L      | Er Rihanïe      | L      | L      | L      | Qarhaiya            | L      | L      | L      |
| Beit Haouïk                      | L      | L      | L      | Es Sfire        | L      | L      | L      | Qarsaita            | L      | L      | L      |
| Beit Hasna                       | L      | L      | L      | Haouara         | L      | L      | L      | Qattine             | L      | L      | L      |
| Beit Zoud                        | L      | L      | L      | Haql el Aazime  | L      | L      | L      | Qemmamine           | L      | L      | L      |
| Bhannine                         | L      | L      | L      | Harf es Siyad   | L      | L      | L      | Qornet El Birqawiye | L      | L      | L      |
| Bqaa Safrine                     | L      | L      | L      | Jairoun         | L      | L      | L      | Qraine              | VL     | VL     | VL     |
| Bqarsouna                        | L      | L      | L      | Jarjour         | L      | L      | L      | Sir Ed Danniye      | L      | L      | L      |
| Broj el Yahouïe                  | L      | L      | L      | Kaf el Malloul  | L      | L      | L      | Tirane              | L      | L      | L      |
| Btermaz                          | L      | L      | L      | Karm el Mohr    | L      | L      | L      | Tourbol             | L      | L      | L      |
| Debaal                           | L      | L      | L      | Ketrane         | L      | L      | L      | Zghartaghri ne      | L      | L      | L      |

| Mohafazat North Lebanon Forecast |        |        |        |                |        |        |        |                      |        |        |        |
|----------------------------------|--------|--------|--------|----------------|--------|--------|--------|----------------------|--------|--------|--------|
| Caza: Tripoli                    |        |        |        |                |        |        |        |                      |        |        |        |
| Cadastral Area                   | 16 Jan | 17 Jan | 18 Jan | Cadastral Area | 16 Jan | 17 Jan | 18 Jan | Cadastral Area       | 16 Jan | 17 Jan | 18 Jan |
| El Qalamoun                      | L      | L      | L      | El Taouile     | NR     | NR     | NR     | Mina 2               | NR     | NR     | NR     |
| El Baqar                         | NR     | NR     | NR     | En Nouri       | NR     | NR     | NR     | Mina 3               | NR     | NR     | NR     |
| El Bellane                       | NR     | NR     | NR     | Er Remmaneh    | NR     | NR     | NR     | Mina Jardin          | VL     | VL     | VL     |
| El Haddadine                     | VL     | VL     | VL     | Er Rmaile      | NR     | NR     | NR     | Ramkine              | NR     | NR     | NR     |
| El Hadid                         | NR     | NR     | NR     | Es Souayqa     | NR     | NR     | NR     | Sanani               | NR     | NR     | NR     |
| El Maksbi                        | NR     | NR     | NR     | Et Tabbaneh    | NR     | NR     | NR     | Tourous              | NR     | NR     | NR     |
| El Mdoura                        | NR     | NR     | NR     | Ez Zahrieh     | NR     | NR     | NR     | Tripoli              | L      | L      | L      |
| El Mhatra                        | NR     | NR     | NR     | Ile du Palmier | NR     | NR     | NR     | Trablous el Tabbaneh | VL     | VL     | VL     |
| El Qobbe                         | NR     | NR     | NR     | Laoukas        | NR     | NR     | NR     | Trablous ez Zeitoun  | VL     | VL     | VL     |
| El Tall                          | VL     | VL     | VL     | Mina 1         | NR     | NR     | NR     |                      |        |        |        |

| Mohafazat North Lebanon Forecast |        |        |        |                |        |        |        |                       |        |        |        |
|----------------------------------|--------|--------|--------|----------------|--------|--------|--------|-----------------------|--------|--------|--------|
| Caza: Zgharta                    |        |        |        |                |        |        |        |                       |        |        |        |
| Cadastral Area                   | 16 Jan | 17 Jan | 18 Jan | Cadastral Area | 16 Jan | 17 Jan | 18 Jan | Cadastral Area        | 16 Jan | 17 Jan | 18 Jan |
| Aachach                          | L      | L      | L      | Et Talle       | L      | L      | L      | Mazraat Ajbeaa        | L      | L      | L      |
| Aalma                            | L      | L      | L      | Hailane        | L      | L      | L      | Mazraat et Teffah     | L      | L      | L      |
| Aardat                           | L      | L      | L      | Haouqa         | L      | L      | L      | Mazraat Jnaid         | L      | L      | L      |
| Aarjess                          | L      | L      | L      | Hariq Zgharta  | VL     | VL     | VL     | Meriata               | L      | L      | L      |
| Aintourine                       | L      | L      | L      | Houakir        | L      | L      | L      | Miziara               | L      | L      | L      |
| Aitou                            | L      | L      | L      | Hraiqess       | L      | L      | L      | Morh Kfar Sghab       | L      | L      | L      |
| Asnoun                           | L      | L      | L      | Iaal           | L      | L      | L      | Qarah Bach            | L      | L      | L      |
| Baslouqit                        | L      | L      | L      | Kafraiya       | L      | L      | L      | Rachaaïne             | VL     | VL     | VL     |
| Bchannine                        | L      | L      | L      | Karm Sadde     | L      | L      | L      | Ras Kifa              | L      | L      | L      |
| Bchennata                        | L      | L      | L      | Kfar Chakhna   | L      | L      | L      | Rmaila                | L      | L      | L      |
| Bisbeel                          | L      | L      | L      | Kfar Dlaqos    | VL     | VL     | VL     | Sakhra                | L      | L      | L      |
| Bneshai                          | L      | L      | L      | Kfar Haoura    | L      | L      | L      | Seraal                | L      | L      | L      |
| Boussit                          | L      | L      | L      | Kfar Hata      | L      | L      | L      | Sibaał                | L      | L      | L      |
| Daraiya                          | L      | L      | L      | Kfar Sghab     | L      | L      | L      | Taouahine Ras en Nahr | L      | L      | L      |
| Deir ej Jdaide                   | L      | L      | L      | Kfar Yachit    | L      | L      | L      | Toula                 | L      | L      | L      |
| Ehden                            | L      | L      | L      | Kfar Zaina     | L      | L      | L      | Zgharta               | VL     | VL     | VL     |
| Ejbaa                            | L      | L      | L      | Kfarfou        | L      | L      | L      |                       |        |        |        |
| El Khaldiye                      | L      | L      | L      | Majdlaya       | L      | L      | L      |                       |        |        |        |

| Mohafazat Bekaa Forecast |        |        |        |                    |        |        |        |                         |        |        |        |
|--------------------------|--------|--------|--------|--------------------|--------|--------|--------|-------------------------|--------|--------|--------|
| Caza: Rachaiya           |        |        |        |                    |        |        |        |                         |        |        |        |
| Cadastral Area           | 16 Jan | 17 Jan | 18 Jan | Cadastral Area     | 16 Jan | 17 Jan | 18 Jan | Cadastral Area          | 16 Jan | 17 Jan | 18 Jan |
| Aaiha                    | VL     | VL     | VL     | El Bire            | L      | L      | L      | Majdel Balhiss          | L      | L      | L      |
| Ain Aarab                | L      | L      | L      | El Fessekh         | VL     | VL     | VL     | Marj es Samah           | L      | L      | L      |
| Ain Aata                 | L      | L      | L      | El Mhaidthe        | L      | L      | L      | Mazraat Deir el Achayer | VL     | VL     | VL     |
| Ain Horche               | L      | L      | L      | Er Rafid           | L      | L      | L      | Mazraat el Qalioun      | L      | L      | L      |
| Aita el Foukhar          | L      | L      | L      | Haloua             | L      | L      | L      | Mdoukha                 | L      | L      | L      |
| Bakka                    | L      | L      | L      | Haouch el Qinnaabe | L      | L      | L      | Rachaiya                | L      | L      | L      |
| Bakkifa                  | L      | L      | L      | Kaoukaba           | VL     | VL     | VL     | Tannoura                | L      | L      | L      |
| Beit Lahia               | L      | L      | L      | Kfar Qouq          | L      | L      | L      | Toultata                | L      | L      | L      |
| Dahr el Ahmar            | L      | L      | L      | Kfardenis          | L      | L      | L      | Yanta                   | L      | L      | L      |
| Deir el Achayer          | VL     | VL     | VL     | Kfarmechki         | L      | L      | L      |                         |        |        |        |
| El Aakabe                | L      | L      | L      | Khirbet Rouha      | L      | L      | L      |                         |        |        |        |

| Mohafazat Bekaa Forecast |        |        |        |                   |        |        |        |                           |        |        |        |
|--------------------------|--------|--------|--------|-------------------|--------|--------|--------|---------------------------|--------|--------|--------|
| Caza: West Bekaa         |        |        |        |                   |        |        |        |                           |        |        |        |
| Cadastral Area           | 16 Jan | 17 Jan | 18 Jan | Cadastral Area    | 16 Jan | 17 Jan | 18 Jan | Cadastral Area            | 16 Jan | 17 Jan | 18 Jan |
| Aaitanit                 | L      | L      | L      | El Ouaqf          | VL     | VL     | VL     | Loussa                    | L      | L      | L      |
| Aammiq                   | L      | L      | L      | El Qaraaoun       | L      | L      | L      | Machghara                 | L      | L      | L      |
| Aana                     | L      | L      | L      | El Raouda         | L      | L      | L      | Maidoun                   | L      | L      | L      |
| Ain et Tine              | L      | L      | L      | Ghazze            | VL     | VL     | VL     | Majdel Aanjar             | L      | L      | L      |
| Ain Zebde                | L      | L      | L      | Hammara           | L      | L      | L      | Mansoura                  | L      | L      | L      |
| Baaloul                  | L      | L      | L      | Haouch el Harime  | L      | L      | L      | Qelia                     | L      | L      | L      |
| Bab Mareaa               | L      | L      | L      | Harimet es Soghra | L      | L      | L      | Saghbine                  | L      | L      | L      |
| Cheberqiyet Aammiq       | NR     | NR     | NR     | Joubb Jannine     | L      | L      | L      | Saouiri                   | VL     | VL     | VL     |
| Deir Ain ej Jaouze       | L      | L      | L      | Kamed el Loz      | L      | L      | L      | Sultan Yacoub el Aradi    | L      | L      | L      |
| Deir Tahnich             | L      | L      | L      | Kefraiya          | L      | L      | L      | Sohmor                    | L      | L      | L      |
| Ed Dakoue                | VL     | VL     | VL     | Khiaret el Aatiqa | VL     | VL     | VL     | Soultane Yaaqoub et Tahta | L      | L      | L      |
| Ej Jezire                | VL     | VL     | VL     | Khirbet Qanafar   | L      | L      | L      | Tell Znoub                | VL     | VL     | VL     |
| El Khiara                | L      | L      | L      | Lala              | L      | L      | L      | Yohmor el Beqaa           | L      | L      | L      |
| El Marj                  | L      | L      | L      | Libbaya           | L      | L      | L      | Zellaya                   | L      | L      | L      |

| Mohafazat Bekaa Forecast |        |        |        |                   |        |        |        |                           |        |        |        |
|--------------------------|--------|--------|--------|-------------------|--------|--------|--------|---------------------------|--------|--------|--------|
| Caza: Zahleh             |        |        |        |                   |        |        |        |                           |        |        |        |
| Cadastral Area           | 16 Jan | 17 Jan | 18 Jan | Cadastral Area    | 16 Jan | 17 Jan | 18 Jan | Cadastral Area            | 16 Jan | 17 Jan | 18 Jan |
| Aanjar                   | L      | L      | L      | En Nasriye        | NR     | NR     | NR     | Qaa er Rim                | L      | L      | L      |
| Ablah                    | VL     | VL     | VL     | Es Safra          | L      | L      | L      | Qabb Elias                | L      | L      | L      |
| Ain el Ghmiqa            | L      | L      | L      | Haouch el Ghanam  | NR     | NR     | NR     | Qoussaya                  | L      | L      | L      |
| Ain Kfar Zabad           | L      | L      | L      | Haouch el Oumara  | VL     | VL     | VL     | Raite                     | VL     | VL     | VL     |
| Ali en Nahri             | NR     | NR     | NR     | Haouch Hala       | VL     | VL     | VL     | Rayak                     | NR     | NR     | NR     |
| Barr Elias               | VL     | VL     | VL     | Haouch Qaissar    | L      | L      | L      | Saadnayel                 | VL     | VL     | VL     |
| Bouarej                  | L      | L      | L      | Haouche Mandara   | NR     | NR     | NR     | Taalabaya                 | VL     | VL     | VL     |
| Chebrqiye                | NR     | NR     | NR     | Hazerta           | L      | L      | L      | Tell Aamara               | VL     | VL     | VL     |
| Chtaura                  | L      | L      | L      | Hoshmosh          | L      | L      | L      | Tell el Akhdar            | L      | L      | L      |
| Deir Taanayel            | VL     | VL     | VL     | Jalala            | VL     | VL     | VL     | Terbol                    | L      | L      | L      |
| Deir el Ghazaal          | L      | L      | L      | Kfar Zabad        | L      | L      | L      | Touaite                   | L      | L      | L      |
| Delhamiye                | NR     | NR     | NR     | Ksara             | NR     | NR     | NR     | Zahle Aradi               | L      | L      | L      |
| Ech Chrachir             | L      | L      | L      | Maallaqa          | NR     | NR     | NR     | Zahleh Al-Rassie          | VL     | VL     | VL     |
| El Faida                 | VL     | VL     | VL     | Makse             | VL     | VL     | VL     | Zahleh Barbara            | VL     | VL     | VL     |
| El Fourzol               | L      | L      | L      | Massa             | L      | L      | L      | Zahleh Haouche Al-Zaraane | VL     | VL     | VL     |
| El Karak                 | L      | L      | L      | Nabi Ayla         | VL     | VL     | VL     | Zahleh Mar Antonios       | NR     | NR     | NR     |
| El Mazraa                | L      | L      | L      | Nasriye           | VL     | VL     | VL     | Zahleh Mar Elias          | NR     | NR     | NR     |
| El Mrahat                | NR     | NR     | NR     | Niha              | VL     | VL     | VL     | Zahleh Mar Gerios         | VL     | VL     | VL     |
| El Mrajat                | L      | L      | L      | Ouadi Ed Delleem  | L      | L      | L      | Zahleh Midan              | VL     | VL     | VL     |
| En Naassat               | VL     | VL     | VL     | Ouadi el Aarayech | L      | L      | L      | Zahleh Saidet Al-Najda    | NR     | NR     | NR     |



| Mohafazat Mount Lebanon Forecast |        |        |        |                   |        |        |        |                     |        |        |        |
|----------------------------------|--------|--------|--------|-------------------|--------|--------|--------|---------------------|--------|--------|--------|
| Caza: Aley                       |        |        |        |                   |        |        |        |                     |        |        |        |
| Cadastral Area                   | 16 Jan | 17 Jan | 18 Jan | Cadastral Area    | 16 Jan | 17 Jan | 18 Jan | Cadastral Area      | 16 Jan | 17 Jan | 18 Jan |
| Aabay                            | L      | L      | L      | Bserrine          | L      | L      | L      | Haql el Fai         | VL     | VL     | VL     |
| Aaley                            | L      | L      | L      | Bshamoun          | L      | L      | L      | Haret el Mir        | L      | L      | L      |
| Aaramoun                         | L      | L      | L      | Bsous             | L      | L      | L      | Haret el Omara      | L      | L      | L      |
| Ain Aanoub                       | L      | L      | L      | Btalloun          | L      | L      | L      | Homs Oua Hama       | L      | L      | L      |
| Ain Dara                         | L      | L      | L      | Btater            | L      | L      | L      | Houmale             | L      | L      | L      |
| Ain Drafil                       | L      | L      | L      | Chanai            | L      | L      | L      | Kayfoun             | VL     | VL     | VL     |
| Ain ej Jdide                     | L      | L      | L      | Charoun           | L      | L      | L      | Kfar Aamma          | L      | L      | L      |
| Ain el Halazoun                  | L      | L      | L      | Chartoun          | L      | L      | L      | Kfar Malta          | L      | L      | L      |
| Ain Ksour                        | L      | L      | L      | Daqqoun           | L      | L      | L      | Khalde              | L      | L      | L      |
| Ain Trez                         | L      | L      | L      | Dayr Qoubil       | L      | L      | L      | Khhale              | L      | L      | L      |
| Ayn er Remmane                   | L      | L      | L      | Dfoun             | L      | L      | L      | Maasriti            | L      | L      | L      |
| Aynab                            | L      | L      | L      | Dwayr er Roummane | L      | L      | L      | Majdel Baana        | L      | L      | L      |
| Aytate                           | L      | L      | L      | Eghmid            | L      | L      | L      | Majdlaiya           | L      | L      | L      |
| Baaouarta                        | L      | L      | L      | El Aazzouniye     | L      | L      | L      | Mazraat en Nahr     | L      | L      | L      |
| Baysour                          | L      | L      | L      | El Binnay         | L      | L      | L      | Mochqiti            | L      | L      | L      |
| Bdedoun                          | L      | L      | L      | Jisr El Qadi      | L      | L      | L      | Qmatiye             | VL     | VL     | VL     |
| Bedghane                         | L      | L      | L      | El Mansouriye     | L      | L      | L      | Rechmaiya           | L      | L      | L      |
| Bhamdoun                         | L      | L      | L      | El Mecherfe       | L      | L      | L      | Rejme               | L      | L      | L      |
| Bhamdoun el Mhatta               | L      | L      | L      | El Mraijat        | L      | L      | L      | Remhala             | L      | L      | L      |
| Bhouwara                         | L      | L      | L      | Er Ramliye        | L      | L      | L      | Rwaysset en Naamane | L      | L      | L      |
| Bkhochtay                        | L      | L      | L      | Er Rwaysse        | L      | L      | L      | Shemlan             | L      | L      | L      |
| Blaybel                          | L      | L      | L      | Esh Shwayfate     | L      | L      | L      | Silfaya             | L      | L      | L      |
| Bmahrai                          | L      | L      | L      | Fsaqine           | L      | L      | L      | Soufar              | L      | L      | L      |
| Bmakkine                         | VL     | VL     | VL     | Ghaboun           | L      | L      | L      | Souq el Gharb       | L      | L      | L      |
| Bouzraide                        | L      | L      | L      | Habramoun         | L      | L      | L      |                     |        |        |        |

| Mohafazat Mount Lebanon Forecast |        |        |        |                    |        |        |        |                      |        |        |        |
|----------------------------------|--------|--------|--------|--------------------|--------|--------|--------|----------------------|--------|--------|--------|
| Caza: Baabda                     |        |        |        |                    |        |        |        |                      |        |        |        |
| Cadastral Area                   | 16 Jan | 17 Jan | 18 Jan | Cadastral Area     | 16 Jan | 17 Jan | 18 Jan | Cadastral Area       | 16 Jan | 17 Jan | 18 Jan |
| Ain Mouaffaq                     | VL     | VL     | VL     | El Aarbanie        | L      | L      | L      | Jouar el Haouz       | L      | L      | L      |
| Arsoun                           | L      | L      | L      | El Hlaliye         | L      | L      | L      | Jouret Arsoun        | L      | L      | L      |
| Baabda                           | L      | L      | L      | El Khalouat        | L      | L      | L      | Kahhale              | L      | L      | L      |
| Baalchmay                        | L      | L      | L      | El Khraibe         | L      | L      | L      | Kfar Selouane        | L      | L      | L      |
| Bmariam                          | L      | L      | L      | El Kneisse         | L      | L      | L      | Kfar Shima           | L      | L      | L      |
| Laylaki                          | VL     | VL     | VL     | El Louaize         | L      | L      | L      | Merdashe             | L      | L      | L      |
| Borj el Brajne                   | VL     | VL     | VL     | El Mzairaa         | L      | L      | L      | Qirtada              | L      | L      | L      |
| Boutchai                         | L      | L      | L      | El Qalaa           | L      | L      | L      | Qornayel             | L      | L      | L      |
| Bsaba                            | L      | L      | L      | El Qraye           | L      | L      | L      | Qoubbeyaa            | L      | L      | L      |
| Btebiat                          | L      | L      | L      | El Qsaibe          | L      | L      | L      | Qtale                | L      | L      | L      |
| Btekhmay                         | L      | L      | L      | Falougha           | L      | L      | L      | Ras el Harf          | L      | L      | L      |
| Bzibdine                         | L      | L      | L      | Forn ech Cheback   | L      | L      | L      | Ras el Metn          | L      | L      | L      |
| Chebaniye                        | L      | L      | L      | Hadath             | L      | L      | L      | Rouaissat el Ballout | L      | L      | L      |
| Chiyah                           | VL     | VL     | VL     | Hammana            | L      | L      | L      | Salima               | L      | L      | L      |
| Chmaissa                         | L      | L      | L      | Haret Hreik        | VL     | VL     | VL     | Shwite               | L      | L      | L      |
| Deir el Harf                     | L      | L      | L      | Haret el Feghaliye | L      | L      | L      | Tahwit el Ghadire    | VL     | VL     | VL     |
| Deir Khouna                      | L      | L      | L      | Haret es Sitt      | VL     | VL     | VL     | Tarchich             | L      | L      | L      |
| Dhour el Aabadiye                | L      | L      | L      | Haret Hamze        | L      | L      | L      | Wadi Shahrour        | L      | L      | L      |
| Dlaibe                           | L      | L      | L      | Hasbaya            | L      | L      | L      | Zandouqa             | L      | L      | L      |

| Mohafazat Mount Lebanon Forecast |        |        |        |                |        |        |        |                      |        |        |        |
|----------------------------------|--------|--------|--------|----------------|--------|--------|--------|----------------------|--------|--------|--------|
| Caza: Chouf                      |        |        |        |                |        |        |        |                      |        |        |        |
| Cadastral Area                   | 16 Jan | 17 Jan | 18 Jan | Cadastral Area | 16 Jan | 17 Jan | 18 Jan | Cadastral Area       | 16 Jan | 17 Jan | 18 Jan |
| Aalmane                          | L      | L      | L      | Deirkouche     | L      | L      | L      | Ghabet Jaafar        | VL     | VL     | VL     |
| Aammattour                       | L      | L      | L      | Dmit Berraniye | L      | L      | L      | Gharife              | L      | L      | L      |
| Aammiq                           | L      | L      | L      | Ed Damour      | L      | L      | L      | Haret Jandal         | L      | L      | L      |
| Aanbal                           | L      | L      | L      | Ed Debbiye     | L      | L      | L      | Hasrout              | L      | L      | L      |
| Aanout                           | L      | L      | L      | Ed Doueir      | L      | L      | L      | Jadra                | L      | L      | L      |
| Aatrine                          | L      | L      | L      | Ej Jahliye     | L      | L      | L      | Jbaa                 | L      | L      | L      |
| Ain el Haour                     | L      | L      | L      | Ej Jahlouf     | L      | L      | L      | Jdaidet              | L      | L      | L      |
| Ain Ouzain                       | L      | L      | L      | Ej Jiye        | L      | L      | L      | Joun                 | L      | L      | L      |
| Ain Qaniye                       | L      | L      | L      | Ej Jmailiye    | L      | L      | L      | Ketermaya            | VL     | VL     | VL     |
| Ain Zhalta                       | L      | L      | L      | El Faouara     | L      | L      | L      | Kfar Faquod          | L      | L      | L      |
| Baadarane                        | L      | L      | L      | El Barouk      | L      | L      | L      | Kfar Hamel           | L      | L      | L      |
| Baaqline                         | L      | L      | L      | El Bire        | L      | L      | L      | Kfar hay             | L      | L      | L      |
| Baassir                          | L      | L      | L      | El Borjein     | L      | L      | L      | Kfar Nabraxh         | L      | L      | L      |
| Baiqoun                          | L      | L      | L      | El Boussail    | L      | L      | L      | Kfar Niss            | L      | L      | L      |
| Barja                            | L      | L      | L      | El Bqaiqe      | L      | L      | L      | Kfarhim              | L      | L      | L      |
| Bater ech Chouf                  | L      | L      | L      | El Fkhaite     | L      | L      | L      | KfarQatra            | L      | L      | L      |
| Batloun                          | L      | L      | L      | El Fraidis     | L      | L      | L      | Klilaiye             | L      | L      | L      |
| Bchetfine                        | L      | L      | L      | El Jleiliye    | L      | L      | L      | Maaniye              | L      | L      | L      |
| Beit Ed Dine                     | L      | L      | L      | El Kahlouniye  | L      | L      | L      | Maasser Beit ed Dine | L      | L      | L      |
| Benouati                         | L      | L      | L      | El Kherbe      | L      | L      | L      | Maasser ech Chouf    | L      | L      | L      |
| Bkechtine                        | L      | L      | L      | El Khraibe     | L      | L      | L      | Majd el Meouch       | L      | L      | L      |
| Bkifa                            | L      | L      | L      | El Knaisse     | L      | L      | L      | Majdalouna           | L      | L      | L      |
| Boutme                           | L      | L      | L      | El Mechref     | L      | L      | L      | Mazboud              | VL     | VL     | VL     |
| Bsaba                            | L      | L      | L      | El Mghairiye   | L      | L      | L      | Mazmoura             | L      | L      | L      |
| Chemaarine                       | L      | L      | L      | El Moughaire   | L      | L      | L      | Mazraat ech Chouf    | L      | L      | L      |
| Chemmis                          | L      | L      | L      | El Moukhtara   | L      | L      | L      | Mazraat ed Dahr      | L      | L      | L      |
| Chhim                            | L      | L      | L      | El Mtolle      | L      | L      | L      | Mrousti              | L      | L      | L      |
| Chourit                          | L      | L      | L      | El Ouardaniye  | L      | L      | L      | Naamet               | L      | L      | L      |
| Dahr el Mghara                   | L      | L      | L      | El Ouarhaniye  | L      | L      | L      | Niha                 | L      | L      | L      |
| Dalhoun                          | L      | L      | L      | El Qreiaa      | L      | L      | L      | Ouadi Deir           | VL     | VL     | VL     |
| Daraiya                          | L      | L      | L      | Er Rmaile      | L      | L      | L      | Ouadi es Sitt        | L      | L      | L      |
| Dardourit                        | L      | L      | L      | Es Semqaniye   | L      | L      | L      | Serjbal              | L      | L      | L      |
| Deir Baba                        | L      | L      | L      | Et Mtaile      | L      | L      | L      | Sibline              | L      | L      | L      |
| Deir el Mkhalles                 | L      | L      | L      | Ez Zaarouriye  | L      | L      | L      |                      |        |        |        |
| Deir el Qamar                    | L      | L      | L      | Fabr           | L      | L      | L      |                      |        |        |        |

| Mohafazat Mount Lebanon Forecast |        |        |        |                   |        |        |        |                    |        |        |        |
|----------------------------------|--------|--------|--------|-------------------|--------|--------|--------|--------------------|--------|--------|--------|
| Caza: Jbail                      |        |        |        |                   |        |        |        |                    |        |        |        |
| Cadastral Area                   | 16 Jan | 17 Jan | 18 Jan | Cadastral Area    | 16 Jan | 17 Jan | 18 Jan | Cadastral Area     | 16 Jan | 17 Jan | 18 Jan |
| Aabeydate                        | L      | L      | L      | El Ghabat         | L      | L      | L      | Kfar Kidde         | L      | L      | L      |
| Aalita                           | L      | L      | L      | El Hdaini         | L      | L      | L      | Kfar Masseur       | L      | L      | L      |
| Aalamat                          | L      | L      | L      | El Hsoun          | L      | L      | L      | Kfar Qawasse       | L      | L      | L      |
| Aamshite                         | L      | L      | L      | El Kafr           | L      | L      | L      | Kfoun              | L      | L      | L      |
| Aannaya                          | L      | L      | L      | El Mejdel         | L      | L      | L      | Lassa              | L      | L      | L      |
| Aarasta                          | L      | L      | L      | El Mogheiri       | L      | L      | L      | Lehfed             | L      | L      | L      |
| Adonis                           | L      | L      | L      | El Mzarib         | L      | L      | L      | Maade              | L      | L      | L      |
| Afqa                             | L      | L      | L      | El Qottara        | L      | L      | L      | Maaden             | L      | L      | L      |
| Ain ed Delbe                     | L      | L      | L      | Er Ramoute        | L      | L      | L      | Maifouq            | L      | L      | L      |
| Ain el bared                     | L      | L      | L      | Es Souane         | L      | L      | L      | Mar Maroun Aannaya | VL     | VL     | VL     |
| Ain El-Ghouaybe                  | L      | L      | L      | Fatre             | L      | L      | L      | Mastita            | L      | L      | L      |
| Ain jrain                        | L      | L      | L      | Ferhet            | L      | L      | L      | Mazraat es Siyad   | L      | L      | L      |
| Ayn Kfaa                         | L      | L      | L      | Fghale            | L      | L      | L      | Mechane            | L      | L      | L      |
| Ayoun el Aalaq                   | L      | L      | L      | Frat              | L      | L      | L      | Mechmech           | L      | L      | L      |
| Bazyoun                          | L      | L      | L      | Ghalboun          | L      | L      | L      | Nahr Ibrahim       | L      | L      | L      |
| Behdaydate                       | L      | L      | L      | Gharzouz          | L      | L      | L      | Qamez              | L      | L      | L      |
| Beje                             | L      | L      | L      | Ghorfine          | L      | L      | L      | Qartaboune         | L      | L      | L      |
| Bekhaaze                         | L      | L      | L      | Habil             | L      | L      | L      | Qorqaye            | L      | L      | L      |
| Bentael                          | L      | L      | L      | Halate            | L      | L      | L      | Qortaba            | L      | L      | L      |
| Beshtida                         | L      | L      | L      | Haqel             | L      | L      | L      | Ras Osta           | L      | L      | L      |
| Beyt Hebbaq                      | L      | L      | L      | Hbaline           | L      | L      | L      | Rihane             | VL     | VL     | VL     |
| Birget Hjoula                    | L      | L      | L      | Hboub             | L      | L      | L      | Saqi Rechmaiya     | L      | L      | L      |
| Blate                            | L      | L      | L      | Hema Er-Rehmani   | L      | L      | L      | Saqyet el Khayt    | L      | L      | L      |
| Bmehrline                        | L      | L      | L      | Hjoula            | L      | L      | L      | Sbayel             | L      | L      | L      |
| Bolhos                           | L      | L      | L      | Hosna             | L      | L      | L      | Sebrine            | L      | L      | L      |
| Bshille                          | L      | L      | L      | Hosrayel          | L      | L      | L      | Seraaiita          | L      | L      | L      |
| Bzebdine                         | L      | L      | L      | Hsarate           | L      | L      | L      | Shamate            | L      | L      | L      |
| Deir Mar Sarkis                  | L      | L      | L      | Jabal Homsaiya    | L      | L      | L      | Shikhane           | L      | L      | L      |
| Edde                             | L      | L      | L      | Jaj               | L      | L      | L      | Shmout             | L      | L      | L      |
| Ehmej                            | L      | L      | L      | Janne             | L      | L      | L      | Tadmor             | L      | L      | L      |
| El Mounsef                       | L      | L      | L      | Jbayl             | L      | L      | L      | Tartej             | L      | L      | L      |
| El Aaqoura                       | L      | L      | L      | Jedayel           | VL     | VL     | VL     | Tourzaya           | L      | L      | L      |
| El Berbara                       | L      | L      | L      | Jlaysia           | L      | L      | L      | Yanouh             | L      | L      | L      |
| El Brayj                         | L      | L      | L      | Jouret el Qattine | L      | L      | L      |                    |        |        |        |

| Mohafazat Mount Lebanon Forecast |        |        |        |                 |        |        |        |                |        |        |        |
|----------------------------------|--------|--------|--------|-----------------|--------|--------|--------|----------------|--------|--------|--------|
| Caza: Kesrwouane                 |        |        |        |                 |        |        |        |                |        |        |        |
| Cadastral Area                   | 16 Jan | 17 Jan | 18 Jan | Cadastral Area  | 16 Jan | 17 Jan | 18 Jan | Cadastral Area | 16 Jan | 17 Jan | 18 Jan |
| Aachqout                         | L      | L      | L      | El Kfour        | L      | L      | L      | Kleiyat        | L      | L      | L      |
| Aajaltoun                        | L      | L      | L      | El Maaysra      | L      | L      | L      | Maarab         | L      | L      | L      |
| Aaqaibeh                         | L      | L      | L      | El Mradiye      | L      | L      | L      | Mairouba       | L      | L      | L      |
| Aaramoun                         | L      | L      | L      | Es Safra        | L      | L      | L      | Mar Elias      | L      | L      | L      |
| Adma et Dafne                    | L      | L      | L      | Ez Zaaytre      | L      | L      | L      | Mrah El-Mir    | L      | L      | L      |
| Ain ed Delbe                     | L      | L      | L      | Ez Zaytoun      | L      | L      | L      | Mchaa el Ftouh | L      | L      | L      |
| Ain er Rihane                    | L      | L      | L      | Faitroun        | L      | L      | L      | Mchaa Faraya   | L      | L      | L      |
| Aintoura                         | L      | L      | L      | Faraiya         | L      | L      | L      | Mzar Sannine   | L      | L      | L      |
| Ard el Ghabe                     | L      | L      | L      | Fatqa           | L      | L      | L      | Nahr Ibrahim   | L      | L      | L      |
| Ballouneh                        | L      | L      | L      | Ftah esh Shouha | L      | L      | L      | Nahr ed Dahb   | L      | L      | L      |
| Batha                            | L      | L      | L      | Ghazir          | L      | L      | L      | Nmoura         | L      | L      | L      |
| Bezhel                           | L      | L      | L      | Ghbale          | L      | L      | L      | Ouata ej Jaouz | L      | L      | L      |
| Beqaatet Achkout                 | L      | L      | L      | Ghidrasse       | L      | L      | L      | Qattine        | L      | L      | L      |
| Beqaatet Kanaan                  | L      | L      | L      | Ghosta          | L      | L      | L      | Raashine       | L      | L      | L      |
| Bqaatouta                        | L      | L      | L      | Haret Sakhr     | L      | L      | L      | Rayfoun        | L      | L      | L      |
| Bqaq ed Dine                     | L      | L      | L      | Harissa         | L      | L      | L      | Sahel Alma     | L      | L      | L      |
| Bzoummar                         | L      | L      | L      | Hillane         | L      | L      | L      | Sarba          | VL     | VL     | VL     |
| Chouane                          | L      | L      | L      | Hiyata          | L      | L      | L      | Shahtoul       | L      | L      | L      |
| Daraya                           | L      | L      | L      | Hrajel          | L      | L      | L      | Shaile         | L      | L      | L      |
| Daraaoun                         | L      | L      | L      | Jdeidet Ghazir  | L      | L      | L      | Shnanaayr      | L      | L      | L      |
| Deir Baqlouch                    | L      | L      | L      | Jeita           | L      | L      | L      | Tabarja        | L      | L      | L      |
| Deir Zeraaya                     | L      | L      | L      | Jounieh Ghadir  | L      | L      | L      | Wata Sillame   | VL     | VL     | VL     |
| Dlehta                           | L      | L      | L      | Jouret Bedrane  | L      | L      | L      | Yahshoushe     | L      | L      | L      |
| Eghbe                            | L      | L      | L      | Jouret Termos   | L      | L      | L      | Zouk Mosbeh    | L      | L      | L      |
| El Bware                         | L      | L      | L      | Jouret Mhade    | L      | L      | L      | Zouk Mkayel    | L      | L      | L      |
| El Aazra                         | L      | L      | L      | Kfar Yassine    | L      | L      | L      |                |        |        |        |
| El Ghine                         | L      | L      | L      | Kfardebiane     | L      | L      | L      |                |        |        |        |
| El Hsayn                         | L      | L      | L      | Kfartai         | L      | L      | L      |                |        |        |        |

| Mohafazat Mount Lebanon Forecast |        |        |        |                   |        |        |        |                   |        |        |        |
|----------------------------------|--------|--------|--------|-------------------|--------|--------|--------|-------------------|--------|--------|--------|
| Caza: El Metn                    |        |        |        |                   |        |        |        |                   |        |        |        |
| Cadastral Area                   | 16 Jan | 17 Jan | 18 Jan | Cadastral Area    | 16 Jan | 17 Jan | 18 Jan | Cadastral Area    | 16 Jan | 17 Jan | 18 Jan |
| Aaintoura                        | L      | L      | L      | Dahr es Saouane   | L      | L      | L      | Hbous             | L      | L      | L      |
| Aamaret Chalhoub                 | VL     | VL     | VL     | Dbaiye            | NR     | NR     | NR     | Hemlaya           | L      | L      | L      |
| Abou Mizane                      | L      | L      | L      | Deir Chamra       | L      | L      | L      | Jall ed Dib       | L      | L      | L      |
| Ain Aalaq                        | L      | L      | L      | Dekwaneh          | VL     | VL     | VL     | Jdaide            | L      | L      | L      |
| Ain Aar                          | L      | L      | L      | Dik el Mehdi      | L      | L      | L      | Jourt el Ballout  | L      | L      | L      |
| Ain el Kharroube                 | L      | L      | L      | Ech Chaouie       | L      | L      | L      | Kfar Aaqab        | L      | L      | L      |
| Ain el Qabou                     | L      | L      | L      | Ech Choueir       | L      | L      | L      | Kfartay           | L      | L      | L      |
| Ain el Qach                      | L      | L      | L      | Ed Daichouniye    | L      | L      | L      | Khiallet el Mtain | L      | L      | L      |
| Ain es-Sindiane                  | L      | L      | L      | Ed Douar          | L      | L      | L      | Majdel Tarchich   | L      | L      | L      |
| Ain et Teffaha                   | L      | L      | L      | Ej Jouar          | L      | L      | L      | Mar Aabda         | L      | L      | L      |
| Ain ez Zaitoune                  | L      | L      | L      | El Masqa          | L      | L      | L      | Marjaba           | L      | L      | L      |
| Ain Saade                        | L      | L      | L      | El Miyasse        | L      | L      | L      | Mazraat Yachouh   | L      | L      | L      |
| Antelias                         | L      | L      | L      | El Aatchane       | L      | L      | L      | Mchika            | L      | L      | L      |
| Aoukar                           | L      | L      | L      | El Aayoun         | L      | L      | L      | Mhaidse           | L      | L      | L      |
| Baabdat                          | L      | L      | L      | El Aayroun        | L      | L      | L      | Mkalles           | L      | L      | L      |
| Beit Chabab                      | L      | L      | L      | El baiyad         | L      | L      | L      | Mzakke            | L      | L      | L      |
| Beit Chaar                       | L      | L      | L      | El Bouchriye      | VL     | VL     | VL     | Nabay             | L      | L      | L      |
| Beit el Kekko                    | VL     | VL     | VL     | El Fanar          | L      | L      | L      | Ouadi Chahine     | L      | L      | L      |
| Beit Meri                        | L      | L      | L      | El Fraike         | L      | L      | L      | Ouadi el Karm     | L      | L      | L      |
| Bell Vue                         | L      | L      | L      | El Khenchara      | L      | L      | L      | Qannabe           | L      | L      | L      |
| Beskinda                         | L      | L      | L      | El Machrah        | L      | L      | L      | Qennabe           | L      | L      | L      |
| Bhersaf                          | L      | L      | L      | El Majzoub        | L      | L      | L      | Qomet el Hamra    | L      | L      | L      |
| Biaqout                          | VL     | VL     | VL     | El Mansouriyet    | L      | L      | L      | Qornet Chahouane  | L      | L      | L      |
| Bikfaiya                         | L      | L      | L      | El Mtaileb        | L      | L      | L      | Ras el Mrouj      | L      | L      | L      |
| Bnabil                           | L      | L      | L      | El Mtain          | L      | L      | L      | Roumie            | L      | L      | L      |
| Bolonia                          | L      | L      | L      | El Qaaqour        | L      | L      | L      | Sin el Fil        | L      | L      | L      |
| Borj Hammoud                     | NR     | NR     | NR     | El Qaissariye     | L      | L      | L      | Tamich            | L      | L      | L      |
| Bqinnaya                         | VL     | VL     | VL     | El Qalaa          | L      | L      | L      | Zabbougha         | L      | L      | L      |
| Broummana                        | L      | L      | L      | En Naqqach        | L      | L      | L      | Zakrit            | L      | L      | L      |
| Bsalim                           | L      | L      | L      | Es Souane         | L      | L      | L      | Zaraaoun          | L      | L      | L      |
| Bsefrine                         | L      | L      | L      | Ez Zalqa          | VL     | VL     | VL     | Zeghrine          | L      | L      | L      |
| Bteghrine                        | L      | L      | L      | Ghabet Bolonia    | L      | L      | L      | Zouq el Kharab    | L      | L      | L      |
| Chahahir                         | L      | L      | L      | Haret Bellane     | L      | L      | L      |                   |        |        |        |
| Dahr el Hossein                  | L      | L      | L      | Hart el Ghaouarni | L      | L      | L      |                   |        |        |        |

**Mohafazat Beirut Forecast**

**Caza: Beirut**

**District: Achrafieh**

| Sector           | 16 Jan | 17 Jan | 18 Jan | Sector        | 16 Jan | 17 Jan | 18 Jan | Sector   | 16 Jan | 17 Jan | 18 Jan |
|------------------|--------|--------|--------|---------------|--------|--------|--------|----------|--------|--------|--------|
| Aadlieh          | VL     | VL     | VL     | Furn El Hayek | NR     | NR     | NR     | Mar Mitr | VL     | VL     | VL     |
| Achrafieh        | NR     | NR     | NR     | Ghabi         | NR     | NR     | NR     | Nasra    | VL     | VL     | VL     |
| Corniche Al Nahr | NR     | NR     | NR     | Hotel Dieu    | VL     | VL     | VL     | Sioufi   | VL     | VL     | VL     |

**District: Ain Mreisse**

| Sector       | 16 Jan | 17 Jan | 18 Jan | Sector | 16 Jan | 17 Jan | 18 Jan |  |  |  |  |
|--------------|--------|--------|--------|--------|--------|--------|--------|--|--|--|--|
| Ain Mreisseh | VL     | VL     | VL     | Jamia  | VL     | VL     | VL     |  |  |  |  |

**District: Bachoura**

| Sector   | 16 Jan | 17 Jan | 18 Jan | Sector      | 16 Jan | 17 Jan | 18 Jan |  |  |  |  |
|----------|--------|--------|--------|-------------|--------|--------|--------|--|--|--|--|
| Bachoura | NR     | NR     | NR     | Basta Tahta | NR     | NR     | NR     |  |  |  |  |

**District: Marfaa**

| Sector  | 16 Jan | 17 Jan | 18 Jan | Sector        | 16 Jan | 17 Jan | 18 Jan | Sector | 16 Jan | 17 Jan | 18 Jan |
|---------|--------|--------|--------|---------------|--------|--------|--------|--------|--------|--------|--------|
| Majdieh | NR     | NR     | NR     | Minet Al Hosn | NR     | NR     | NR     | Nejmeh | NR     | NR     | NR     |
| Marfa   | NR     | NR     | NR     |               |        |        |        |        |        |        |        |

**District: Mazraa**

| Sector           | 16 Jan | 17 Jan | 18 Jan | Sector | 16 Jan | 17 Jan | 18 Jan | Sector           | 16 Jan | 17 Jan | 18 Jan |
|------------------|--------|--------|--------|--------|--------|--------|--------|------------------|--------|--------|--------|
| Al Aamlieh       | NR     | NR     | NR     | Horsh  | VL     | VL     | VL     | Ras Al Nabaa     | VL     | VL     | VL     |
| Basta Faouka     | NR     | NR     | NR     | Malaab | VL     | VL     | VL     | Tareek Al Jdideh | NR     | NR     | NR     |
| Bourj Abi Haidar | NR     | NR     | NR     | Mazraa | NR     | NR     | NR     |                  |        |        |        |

**District: Medawar**

| Sector | 16 Jan | 17 Jan | 18 Jan | Sector      | 16 Jan | 17 Jan | 18 Jan | Sector | 16 Jan | 17 Jan | 18 Jan |
|--------|--------|--------|--------|-------------|--------|--------|--------|--------|--------|--------|--------|
| Jisr   | NR     | NR     | NR     | Mar Mikhael | NR     | NR     | NR     | Remeil | NR     | NR     | NR     |
| Khodr  | NR     | NR     | NR     |             |        |        |        |        |        |        |        |

| Mohafazat Beirut Forecast |        |        |        |         |        |        |        |               |        |        |        |
|---------------------------|--------|--------|--------|---------|--------|--------|--------|---------------|--------|--------|--------|
| Caza: Beirut              |        |        |        |         |        |        |        |               |        |        |        |
| District: Minet Al Hosn   |        |        |        |         |        |        |        |               |        |        |        |
| Sector                    | 16 Jan | 17 Jan | 18 Jan | Sector  | 16 Jan | 17 Jan | 18 Jan | Sector        | 16 Jan | 17 Jan | 18 Jan |
| Bab Idriss                | NR     | NR     | NR     | Kantari | NR     | NR     | NR     | Minet Al Hosn | NR     | NR     | NR     |
| Jounblat                  | VL     | VL     | VL     |         |        |        |        |               |        |        |        |

| District: Moussaitbeh |        |        |        |                  |        |        |        |              |        |        |        |
|-----------------------|--------|--------|--------|------------------|--------|--------|--------|--------------|--------|--------|--------|
| Sector                | 16 Jan | 17 Jan | 18 Jan | Sector           | 16 Jan | 17 Jan | 18 Jan | Sector       | 16 Jan | 17 Jan | 18 Jan |
| Al Zarif              | VL     | VL     | VL     | Moussaitbeh      | NR     | NR     | NR     | Tallet Druze | NR     | NR     | NR     |
| Dar Al Fatwa          | NR     | NR     | NR     | Sanayeh          | VL     | VL     | VL     | Unesco       | VL     | VL     | VL     |
| Mar Elias             | VL     | VL     | VL     | Tallet Al Khayat | VL     | VL     | VL     | Wata         | VL     | VL     | VL     |

| District: Ras Beirut |        |        |        |            |        |        |        |         |        |        |        |
|----------------------|--------|--------|--------|------------|--------|--------|--------|---------|--------|--------|--------|
| Sector               | 16 Jan | 17 Jan | 18 Jan | Sector     | 16 Jan | 17 Jan | 18 Jan | Sector  | 16 Jan | 17 Jan | 18 Jan |
| Ain Al Tineh         | NR     | NR     | NR     | Qoreitem   | VL     | VL     | VL     | Rawcheh | VL     | VL     | VL     |
| Hamra                | VL     | VL     | VL     | Ras Beirut | VL     | VL     | VL     | Snoubra | NR     | NR     | NR     |
| Manara               | VL     | VL     | VL     |            |        |        |        |         |        |        |        |

| District: Remeil |        |        |        |                    |        |        |        |          |        |        |        |
|------------------|--------|--------|--------|--------------------|--------|--------|--------|----------|--------|--------|--------|
| Sector           | 16 Jan | 17 Jan | 18 Jan | Sector             | 16 Jan | 17 Jan | 18 Jan | Sector   | 16 Jan | 17 Jan | 18 Jan |
| Al Hikmeh        | NR     | NR     | NR     | Mar Nicolas        | NR     | NR     | NR     | Qobaiyat | NR     | NR     | NR     |
| Geitawi          | NR     | NR     | NR     | Moustashfa Al Roum | NR     | NR     | NR     |          |        |        |        |

| District: Saifi |        |        |        |            |        |        |        |           |        |        |        |
|-----------------|--------|--------|--------|------------|--------|--------|--------|-----------|--------|--------|--------|
| Sector          | 16 Jan | 17 Jan | 18 Jan | Sector     | 16 Jan | 17 Jan | 18 Jan | Sector    | 16 Jan | 17 Jan | 18 Jan |
| Gemmayzeh       | NR     | NR     | NR     | Mar Maroun | NR     | NR     | NR     | Yassouieh | NR     | NR     | NR     |

| District: Zoukak Al Blat |        |        |        |           |        |        |        |  |  |  |  |
|--------------------------|--------|--------|--------|-----------|--------|--------|--------|--|--|--|--|
| Sector                   | 16 Jan | 17 Jan | 18 Jan | Sector    | 16 Jan | 17 Jan | 18 Jan |  |  |  |  |
| Serail                   | NR     | NR     | NR     | Batrakieh | NR     | NR     | NR     |  |  |  |  |



| Mohafazat South Lebanon Forecast |        |        |        |                     |        |        |        |                          |        |        |        |
|----------------------------------|--------|--------|--------|---------------------|--------|--------|--------|--------------------------|--------|--------|--------|
| Caza: Jezzine                    |        |        |        |                     |        |        |        |                          |        |        |        |
| Cadastral Area                   | 16 Jan | 17 Jan | 18 Jan | Cadastral Area      | 16 Jan | 17 Jan | 18 Jan | Cadastral Area           | 16 Jan | 17 Jan | 18 Jan |
| El Midan                         | L      | L      | L      | El Qabaa            | L      | L      | L      | Mazraat Khamlet Khazene  | L      | L      | L      |
| Aaramta                          | L      | L      | L      | El Qatrani          | L      | L      | L      | Mazraat Louzid           | L      | L      | L      |
| Aaray                            | L      | L      | L      | Er Roummani         | L      | L      | L      | Mazraat Ouazaiye         | L      | L      | L      |
| Aazour                           | L      | L      | L      | Es Srairi           | L      | L      | L      | Mazraat Qrouh            | L      | L      | L      |
| Anane                            | L      | L      | L      | Establ              | L      | L      | L      | Mazraat Tamra            | L      | L      | L      |
| Baanoub el Tahta                 | L      | L      | L      | Haitoule            | L      | L      | L      | Mazraat Zighrine Jezzine | L      | L      | L      |
| Bayssour                         | VL     | VL     | VL     | Haitoura            | L      | L      | L      | Mharbiye                 | VL     | VL     | VL     |
| Benouate                         | L      | L      | L      | Hassaniye           | VL     | VL     | VL     | Mjeidil                  | L      | L      | L      |
| Bhannine                         | L      | L      | L      | Hidab               | L      | L      | L      | Mlikh                    | L      | L      | L      |
| Bisri                            | L      | L      | L      | Jernaya             | L      | L      | L      | Mrah el Habas            | L      | L      | L      |
| Bkassine                         | L      | L      | L      | Jezzine             | L      | L      | L      | Ouadi Baanquodain        | VL     | VL     | VL     |
| Bouslaya                         | L      | L      | L      | Jinsnaya            | VL     | VL     | VL     | Ouadi el Laimoun         | L      | L      | L      |
| Bteddine el Liqch                | L      | L      | L      | Karkha              | L      | L      | L      | Ouadi Jezzine            | L      | L      | L      |
| Chbail                           | L      | L      | L      | Kfar Falous         | L      | L      | L      | Qaitoule                 | L      | L      | L      |
| Choualiq                         | VL     | VL     | VL     | Kfar Houne          | L      | L      | L      | Qtale                    | L      | L      | L      |
| Dahr ed Deir                     | L      | L      | L      | Kfar Jarra          | VL     | VL     | VL     | Rihane                   | L      | L      | L      |
| Deir machmouche                  | L      | L      | L      | Kherbet Malayke     | L      | L      | L      | Rimat                    | L      | L      | L      |
| Deir Qattine                     | L      | L      | L      | Lebaa               | L      | L      | L      | Roum                     | L      | L      | L      |
| Ed Demachqiye                    | L      | L      | L      | Machmouche          | L      | L      | L      | Sabbah                   | L      | L      | L      |
| Ej Jarmaq                        | L      | L      | L      | Maknouiye           | L      | L      | L      | Saidoun                  | L      | L      | L      |
| El Aaichiye                      | L      | L      | L      | Mazraat Aaqmata     | L      | L      | L      | Sanaya                   | L      | L      | L      |
| El Bebe                          | L      | L      | L      | Mazraat daraya      | L      | L      | L      | Sejoud                   | L      | L      | L      |
| El Homsiyeh                      | L      | L      | L      | Mazraat el Aarqoub  | L      | L      | L      | Sfaray                   | L      | L      | L      |
| El Louazie                       | L      | L      | L      | Mazraat el Mathane  | L      | L      | L      | Taaid                    | L      | L      | L      |
| El Mahoudiye                     | L      | L      | L      | Mazraat er Rouhbane | L      | L      | L      | Zhilta                   | L      | L      | L      |
| El Ouardiye                      | L      | L      | L      | Mazraat Jabal Toura | L      | L      | L      |                          |        |        |        |

| Mohafazat South Lebanon Forecast |        |        |        |                       |        |        |        |                             |        |        |        |
|----------------------------------|--------|--------|--------|-----------------------|--------|--------|--------|-----------------------------|--------|--------|--------|
| Caza: Saida                      |        |        |        |                       |        |        |        |                             |        |        |        |
| Cadastral Area                   | 16 Jan | 17 Jan | 18 Jan | Cadastral Area        | 16 Jan | 17 Jan | 18 Jan | Cadastral Area              | 16 Jan | 17 Jan | 18 Jan |
| Aabra                            | L      | L      | L      | El Mtairiye           | VL     | VL     | VL     | Mazraat el Mhaidale         | L      | L      | L      |
| Aadloun                          | VL     | VL     | VL     | El Ouata              | VL     | VL     | VL     | Mazraat el Mseileh          | VL     | VL     | VL     |
| Aanqoun                          | L      | L      | L      | El Qraiye             | VL     | VL     | VL     | Mazraat el Ouasta           | VL     | VL     | VL     |
| Aaqtanit                         | L      | L      | L      | En Najjariye          | VL     | VL     | VL     | Mazraat el Oussamiyat       | L      | L      | L      |
| Aarab ej Jall                    | L      | L      | L      | Erkay                 | L      | L      | L      | Mazraat es Snaiber          | L      | L      | L      |
| Aarab Tabbaya                    | VL     | VL     | VL     | Es Saksakiye          | VL     | VL     | VL     | Mazraat Jamjim              | L      | L      | L      |
| Ain ed Delp                      | VL     | VL     | VL     | Ez Zire               | NR     | NR     | NR     | Mazraat Kaoutariyet er Rizz | L      | L      | L      |
| Arzai                            | L      | L      | L      | Ez Zrariye            | L      | L      | L      | Mazraat Kfar Badda          | VL     | VL     | VL     |
| Baissariye                       | L      | L      | L      | Ghassaniye            | VL     | VL     | VL     | Mazraat Sari                | L      | L      | L      |
| Berti                            | L      | L      | L      | Insariye              | L      | L      | L      | Mazraat Sinai               | VL     | VL     | VL     |
| Bnaafoul                         | L      | L      | L      | Jezire                | L      | L      | L      | Mazraat Tibna               | L      | L      | L      |
| Bqasta                           | L      | L      | L      | Kaoutariet es Siyad   | L      | L      | L      | Mejdelyoun                  | VL     | VL     | VL     |
| Bramiye et Tahta                 | VL     | VL     | VL     | Kefraiya              | L      | L      | L      | Miye Ou Miye                | VL     | VL     | VL     |
| Dahr El Bourj                    | NR     | NR     | NR     | Kfar Beit             | L      | L      | L      | Ouastani                    | VL     | VL     | VL     |
| Darb es Sim                      | L      | L      | L      | Kfar Chellal          | L      | L      | L      | Qaaqaiet es Snaoubar        | VL     | VL     | VL     |
| El Aaddoussiye                   | VL     | VL     | VL     | Kfar Hatta            | L      | L      | L      | Qennarit                    | L      | L      | L      |
| El Babliye                       | VL     | VL     | VL     | Kfar Melke            | L      | L      | L      | Saida                       | NR     | NR     | NR     |
| El Bramiye                       | VL     | VL     | VL     | Khartoum              | VL     | VL     | VL     | Saida Dekerman              | VL     | VL     | VL     |
| El Ghaziye                       | L      | L      | L      | Kherbet ed Douair     | VL     | VL     | VL     | Salhiye                     | L      | L      | L      |
| El Hajje                         | L      | L      | L      | Kherbet el Bassal     | L      | L      | L      | Sarafand                    | L      | L      | L      |
| El Hara                          | VL     | VL     | VL     | Khzaiz                | L      | L      | L      | Sfenta                      | L      | L      | L      |
| El Hartiye                       | VL     | VL     | VL     | Maghdouch e           | L      | L      | L      | Tallet Toummar              | L      | L      | L      |
| El Khannoussiye                  | L      | L      | L      | Matariyet ech Choumar | L      | L      | L      | Tanbourit                   | VL     | VL     | VL     |
| El Kharayeb                      | L      | L      | L      | Mazraat Aarab Soukkar | VL     | VL     | VL     | Teffahta                    | VL     | VL     | VL     |
| El Loubie                        | L      | L      | L      | Mazraat Deir Taqla    | VL     | VL     | VL     | Zeghdraya                   | VL     | VL     | VL     |
| El Maamariye                     | L      | L      | L      | Mazraat ed Daoudiye   | L      | L      | L      | Zeita                       | VL     | VL     | VL     |
| El Merouaniye                    | L      | L      | L      | Mazraat el Aite Niye  | VL     | VL     | VL     |                             |        |        |        |

| Mohafazat South Lebanon Forecast |        |        |        |                |        |        |        |                      |        |        |        |
|----------------------------------|--------|--------|--------|----------------|--------|--------|--------|----------------------|--------|--------|--------|
| Caza: Sour                       |        |        |        |                |        |        |        |                      |        |        |        |
| Cadastral Area                   | 16 Jan | 17 Jan | 18 Jan | Cadastral Area | 16 Jan | 17 Jan | 18 Jan | Cadastral Area       | 16 Jan | 17 Jan | 18 Jan |
| Aabbassiye                       | VL     | VL     | VL     | Derdghaya      | VL     | VL     | VL     | Mazraat el Michrif   | L      | L      | L      |
| Aaitit                           | L      | L      | L      | Dhaira         | L      | L      | L      | Mazraat ez Zallotiye | L      | L      | L      |
| Aaiye                            | L      | L      | L      | El Bayad       | L      | L      | L      | Mazraat Oum er Rabb  | L      | L      | L      |
| Abou Chech                       | L      | L      | L      | El Bazouriye   | L      | L      | L      | Mazraat Tair Semhat  | L      | L      | L      |
| Ain Baal                         | L      | L      | L      | El Bourgheliye | VL     | VL     | VL     | Naffakhiye           | VL     | VL     | VL     |
| Alma ech Chaab                   | L      | L      | L      | El Henniye     | L      | L      | L      | Niha                 | VL     | VL     | VL     |
| Arzoun                           | VL     | VL     | VL     | El Izziye      | L      | L      | L      | Ouadi Jilo           | L      | L      | L      |
| Bafliye                          | VL     | VL     | VL     | El Majdel      | L      | L      | L      | Qana                 | L      | L      | L      |
| Barich                           | VL     | VL     | VL     | El Mansouri    | L      | L      | L      | Qasmiye              | L      | L      | L      |
| Batoulay                         | L      | L      | L      | El Qlaile      | L      | L      | L      | Recheknaya           | L      | L      | L      |
| Bedias                           | L      | L      | L      | En Naqoura     | L      | L      | L      | Rmadiye              | L      | L      | L      |
| Bestiyat                         | VL     | VL     | VL     | Halloussiyet   | L      | L      | L      | Saddiqine            | L      | L      | L      |
| Borj ech Chemali                 | L      | L      | L      | Hanaouay       | L      | L      | L      | Silaa                | VL     | VL     | VL     |
| Borj Rahhal                      | L      | L      | L      | Hmairi         | VL     | VL     | VL     | Sour                 | L      | L      | L      |
| Boustane                         | L      | L      | L      | Iskandaroun a  | L      | L      | L      | Sour Island          | NR     | NR     | NR     |
| Btaychiye                        | L      | L      | L      | Jbab el Botm   | L      | L      | L      | Srifa                | VL     | VL     | VL     |
| Chaaitiye                        | L      | L      | L      | Jennata        | L      | L      | L      | Tair Debba           | VL     | VL     | VL     |
| Chamaa                           | L      | L      | L      | Jibbain        | L      | L      | L      | Tair Falsay          | L      | L      | L      |
| Chehabiye                        | VL     | VL     | VL     | Jijim          | L      | L      | L      | Tair Harha           | L      | L      | L      |
| Chehour                          | L      | L      | L      | Jouaiya        | L      | L      | L      | Touairi              | L      | L      | L      |
| Chihine                          | L      | L      | L      | Knaisse        | VL     | VL     | VL     | Toura                | VL     | VL     | VL     |
| Debaal                           | VL     | VL     | VL     | Maarake        | VL     | VL     | VL     | Yanouh               | L      | L      | L      |
| Deir Aames                       | L      | L      | L      | Maaroub        | L      | L      | L      | Yarine               | L      | L      | L      |
| Deir Kifa                        | VL     | VL     | VL     | Majdel Zoun    | L      | L      | L      | Zebqine              | L      | L      | L      |
| Deir Qanoun                      | L      | L      | L      | Marnaba        | L      | L      | L      |                      |        |        |        |
| Deir Qanoun en Nahr              | VL     | VL     | VL     | Marouahine     | L      | L      | L      |                      |        |        |        |

| Mohafazat Nabatieh Forecast |        |        |        |                |        |        |        |                  |        |        |        |
|-----------------------------|--------|--------|--------|----------------|--------|--------|--------|------------------|--------|--------|--------|
| Caza: Bent Jbail            |        |        |        |                |        |        |        |                  |        |        |        |
| Cadastral Area              | 16 Jan | 17 Jan | 18 Jan | Cadastral Area | 16 Jan | 17 Jan | 18 Jan | Cadastral Area   | 16 Jan | 17 Jan | 18 Jan |
| Aaitaroun                   | L      | L      | L      | Es Salhani     | L      | L      | L      | Maroun er Rass   | VL     | VL     | VL     |
| Ain Ebel                    | L      | L      | L      | Es Soutaniye   | L      | L      | L      | Qalaouiye        | L      | L      | L      |
| Ainata                      | L      | L      | L      | Et Tiri        | L      | L      | L      | Qaouzah          | L      | L      | L      |
| Aita Ech Chaab              | L      | L      | L      | Froun          | L      | L      | L      | Qatmoun          | L      | L      | L      |
| Aita ez Zott                | L      | L      | L      | Ghandouriy e   | L      | L      | L      | Rachaf           | L      | L      | L      |
| Baraachit                   | L      | L      | L      | Haddatha       | L      | L      | L      | Ramiye           | L      | L      | L      |
| Beit Lif                    | L      | L      | L      | Hanine         | L      | L      | L      | Rmaich           | L      | L      | L      |
| Beit Yahoun                 | L      | L      | L      | Haris          | L      | L      | L      | Safad el Battikh | L      | L      | L      |
| Bent Jbail                  | L      | L      | L      | Jmajime        | L      | L      | L      | Srobbine         | L      | L      | L      |
| Borj Qalaouiye              | VL     | VL     | VL     | Kafra          | L      | L      | L      | Tibnine          | L      | L      | L      |
| Chaqra                      | L      | L      | L      | Kfar Dounine   | VL     | VL     | VL     | Yaroun           | L      | L      | L      |
| Debel                       | L      | L      | L      | Khirbet Selm   | VL     | VL     | VL     | Yatar            | L      | L      | L      |
| Deir Ntar                   | L      | L      | L      | Kounine        | L      | L      | L      |                  |        |        |        |

| Mohafazat Nabatieh Forecast |        |        |        |                   |        |        |        |                     |        |        |        |
|-----------------------------|--------|--------|--------|-------------------|--------|--------|--------|---------------------|--------|--------|--------|
| Caza: Hasbaiya              |        |        |        |                   |        |        |        |                     |        |        |        |
| Cadastral Area              | 16 Jan | 17 Jan | 18 Jan | Cadastral Area    | 16 Jan | 17 Jan | 18 Jan | Cadastral Area      | 16 Jan | 17 Jan | 18 Jan |
| Abou Qamha                  | L      | L      | L      | El Fardis         | L      | L      | L      | Kfar Shouba         | L      | L      | L      |
| Ain Jarfa                   | L      | L      | L      | El Habbariye      | L      | L      | L      | Khalouet Hasbayia   | L      | L      | L      |
| Ain Qenia                   | L      | L      | L      | El Majidiye       | L      | L      | L      | Khreibet Hasbaiya   | L      | L      | L      |
| Bourghos                    | L      | L      | L      | El Meri           | L      | L      | L      | Mazarea Chebaa      | L      | L      | L      |
| Chebaa                      | L      | L      | L      | Hasbaiya          | L      | L      | L      | Mimess              | L      | L      | L      |
| Chouaiya                    | L      | L      | L      | Kaoukaba Hasbaiya | L      | L      | L      | Rachaiya el Foukhar | L      | L      | L      |
| Dellafe                     | L      | L      | L      | Kfair ez Zait     | L      | L      | L      | Slaiyeb             | VL     | VL     | VL     |
| Ed Dnaibe                   | L      | L      | L      | Kfar Hamam        | L      | L      | L      |                     |        |        |        |

| Mohafazat Nabatieh Forecast |        |        |        |                |        |        |        |                  |        |        |        |
|-----------------------------|--------|--------|--------|----------------|--------|--------|--------|------------------|--------|--------|--------|
| Caza: Marjayoun             |        |        |        |                |        |        |        |                  |        |        |        |
| Cadastral Area              | 16 Jan | 17 Jan | 18 Jan | Cadastral Area | 16 Jan | 17 Jan | 18 Jan | Cadastral Area   | 16 Jan | 17 Jan | 18 Jan |
| Aalmane                     | L      | L      | L      | Ebel es Saqi   | L      | L      | L      | Mazraat Doumiat  | VL     | VL     | VL     |
| Aamra                       | VL     | VL     | VL     | El Khiyam      | L      | L      | L      | Mazraat Sarada   | L      | L      | L      |
| Adeice                      | L      | L      | L      | El Qlaiaa      | L      | L      | L      | Mazraet-El-Jrein | L      | L      | L      |
| Ain Arab                    | L      | L      | L      | El Qoussair    | L      | L      | L      | Meiss ej Jabal   | L      | L      | L      |
| Al-Taïbe                    | L      | L      | L      | Es Saouane     | VL     | VL     | VL     | Mhaibib          | L      | L      | L      |
| Beni Haiyane                | VL     | VL     | VL     | Houla          | L      | L      | L      | Qabrikha         | L      | L      | L      |
| Blat                        | L      | L      | L      | Houra          | L      | L      | L      | Qantara          | L      | L      | L      |
| Blida                       | L      | L      | L      | Kfar Kila      | L      | L      | L      | Rabb Salacine    | L      | L      | L      |
| Borj el Mlouk               | L      | L      | L      | Maissate       | VL     | VL     | VL     | Taloussa         | L      | L      | L      |
| Deir Mimas                  | L      | L      | L      | Majdel Silim   | VL     | VL     | VL     | Touline          | L      | L      | L      |
| Deir Seriane                | L      | L      | L      | Marjayoun      | L      | L      | L      |                  |        |        |        |
| Dibbine                     | L      | L      | L      | Markaba        | L      | L      | L      |                  |        |        |        |

| Mohafazat Nabatieh Forecast |        |        |        |                       |        |        |        |                     |        |        |        |
|-----------------------------|--------|--------|--------|-----------------------|--------|--------|--------|---------------------|--------|--------|--------|
| Caza: Nabatieh              |        |        |        |                       |        |        |        |                     |        |        |        |
| Cadastral Area              | 16 Jan | 17 Jan | 18 Jan | Cadastral Area        | 16 Jan | 17 Jan | 18 Jan | Cadastral Area      | 16 Jan | 17 Jan | 18 Jan |
| Aabba                       | L      | L      | L      | Insar                 | L      | L      | L      | Mazraat el Hmaile   | L      | L      | L      |
| Aadchit                     | VL     | VL     | VL     | Jarjouaa              | L      | L      | L      | Mazraat el Khraibe  | L      | L      | L      |
| Aarab Salim                 | L      | L      | L      | Jbaa                  | L      | L      | L      | Mazraat Qalaat Meis | L      | L      | L      |
| Aazze                       | L      | L      | L      | Jibchit               | VL     | VL     | VL     | Mazraat Toul        | L      | L      | L      |
| Ain Qana                    | L      | L      | L      | Kfar Fila             | L      | L      | L      | Nabatiye el Faouqa  | L      | L      | L      |
| Arnoun                      | L      | L      | L      | Kfar Jaouz            | VL     | VL     | VL     | Nabatiye et Tahta   | L      | L      | L      |
| Braiqaa                     | L      | L      | L      | Kfar Roummane         | L      | L      | L      | Qaaqaiet ej Jisr    | L      | L      | L      |
| Choukine                    | L      | L      | L      | Kfar Sir              | L      | L      | L      | Qfar Dajjal         | L      | L      | L      |
| Deir ez Zahrani             | L      | L      | L      | Kfar Tibnit           | L      | L      | L      | Roumine             | L      | L      | L      |
| Ech Charqiye                | L      | L      | L      | Kfaroue               | L      | L      | L      | Sarba               | L      | L      | L      |
| Ed Douair                   | L      | L      | L      | Maifadoun             | L      | L      | L      | Sir el Gharbiye     | L      | L      | L      |
| El Kfour                    | L      | L      | L      | Mazraat Aali et Taher | VL     | VL     | VL     | Yohmor              | L      | L      | L      |
| El Qsaibe                   | L      | L      | L      | Mazraat Ain Bou Souar | L      | L      | L      | Zaoutar el Charqiye | L      | L      | L      |
| En Nmairiye                 | L      | L      | L      | Mazraat Biyad         | L      | L      | L      | Zaoutar el Gharbiye | L      | L      | L      |
| Habbouch                    | L      | L      | L      | Mazraat Bsaffour      | L      | L      | L      | Zebdine             | VL     | VL     | VL     |
| Harouf                      | VL     | VL     | VL     | Mazraat Chal Baal     | L      | L      | L      | Zefta               | L      | L      | L      |
| Houmine el Faouqa           | L      | L      | L      | Mazraat Dmoul         | L      | L      | L      |                     |        |        |        |
| Houmine et Tahta            | L      | L      | L      | Mazraat el Hamra      | L      | L      | L      |                     |        |        |        |

## Reference project:

*This product is an outcome of the project "Towards a better assessment and management of wildfire risk in the Wildland-Urban Interface (WUI) in Lebanon: gaining from the US experience" (2012-2016), managed and implemented by the Land and Natural Resources Program (LNR) at the Institute of the environment (IOE), the University of Balamand (UOB) and funded by the United States Agency for International development (USAID) in agreement with the US National Academies of Sciences (NAS) within the Partnerships for Enhanced Engagement in Research (PEER) program. The US collaborator on this project is the Department of Earth Sciences, Montana State University.*

## Acknowledgements

*This product is made possible by the generous support of the American people through the United States Agency for International Development (USAID). The content is the sole responsibility of the University of Balamand and do not necessarily reflect the views of USAID or the United States Government. Forecasted Fire Weather Index data are provided by the European Forest Fire Information System – [EFFIS](#) of the European Commission Joint Research Centre. The automation of the product was made possible with the technical support of [GIS/Transport, Ltd.](#)*

## For more information visit FireLab:

[ioe-firelab.balamand.edu.lb](http://ioe-firelab.balamand.edu.lb)



## Disclaimer

*Our goal is to keep this information timely and accurate. If errors are brought to our attention, we will try to correct them. However, Balamand University accepts no responsibility or liability whatsoever with regard to the information on this report. This information is:*

- of a general nature only and is not intended to address the specific circumstances of any particular individual or entity;*
- not necessarily comprehensive, complete, accurate or up to date;*
- sometimes linked to websites over which Balamand University has no control and for which the university assumes no responsibility;*
- not professional or legal advice (if you need specific advice, you should always consult a suitably qualified professional).*

*It is our goal to minimize disruption caused by technical errors. However some data or information on our site may have been created or structured in files or formats that are not error-free and we cannot guarantee that our service will not be interrupted or otherwise affected by such problems. Balamand University accepts no responsibility with regard to such problems incurred as a result of using this site or any linked external sites.*